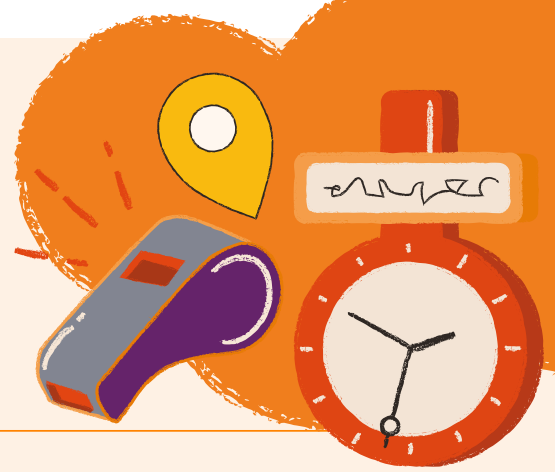


Valid from 14 December 2025 to 16 May 2026

Train times



4 Northampton to Birmingham New Street

Northampton – Rugby – Coventry – Birmingham

Includes all
operators on
this route



National Rail Enquiries

03457 48 49 50
nationalrail.co.uk

Live travel updates

📍 @WestMidRailway
For help, advice and travel updates

📘 /WestMidsRailway

📷 @westmidlandsrailway
For the latest offers and news



Useful information

Plan online

To make sure you have the most accurate train times, it's always best to plan your journey using a journey planner. We have them on our website and app, at our staffed stations and over the phone.

Bring your bike

There is space for at least one bike onboard our services, and you do not need to make a reservation in advance. These are allocated on a first come, first served basis, and if the train is quiet, the Senior Conductor may allow more bikes onboard.

Travelling with a bike to or from London Euston?

Please be aware that on weekdays, only folding bikes are allowed on trains arriving at London Euston between 0700–1000, and departing between 1600–1900.

Getting assistance at the station

We can help with planning your journey, getting on and off our trains, moving around the station, assisting with luggage and purchasing tickets. Call us on 0800 024 8998 or use the Passenger Assist app and we'll make the arrangements. We recommend that you book at least two hours before your journey - this ensures our staff can offer you the best service and notify you if anything is likely to disrupt your journey.

Before you travel

We may be required to make some changes to the timetable, therefore we would recommend that you check your journey before travelling. You can check train times on the WMR app, at wmr.uk/plan, or by calling National Rail Enquiries on 03457 48 49 50.

On The Rails Podcast

In our podcast, we discuss a variety of topics, from timing ticket purchases perfectly to top travel tips, as well as conversations with colleagues and celebrity guests. Please visit wmr.uk/podcast to listen.

West Midlands Railway Customer Relations

You can get in touch with our customer relations team between 0700–1900 on weekdays, and 0800–1600 at weekends.

web: wmr.uk/contact-us
tel: 0333 311 0039 (standard call rates)
post: Freepost West Midlands Railway Customer Relations
facebook: [/WestMidsRailway](https://www.facebook.com/WestMidsRailway)
x: [@WestMidRailway](https://twitter.com/WestMidRailway)

Transport Focus

web: transportfocus.org.uk
email: advice@transportfocus.org.uk
x: [@transportfocus](https://twitter.com/transportfocus)
tel: 0300 123 2350
post: Freepost TRANSPORT FOCUS
77 Timothys Bridge Road
Stratford Enterprise Park
STRATFORD-UPON-AVON
CV37 9BG

London Travelwatch

web: londontravelwatch.org.uk
email: info@londontravelwatch.org.uk
tel: 0203 176 2999
post: London TravelWatch 169 Union Street, London, SE1 0LL

Have your say

We are always striving to do more to improve our train service and want to know what is important to you; what we are doing well and where we may need to have a rethink. There are multiple ways in which you can provide us with your feedback and see the actions we are taking.

- Join our customer panel, your chance to hold us to account and keep us on track wmr.uk/customer-panel
- Our Post Travel Feedback enables you to provide invaluable feedback when travelling with us wmr.uk/yourjourney
- Your chance to speak to our experts and ask your questions wmr.uk/whistle-stop-tour
- Take a look at some of the improvements we have made thanks to your feedback wmr.uk/you-said-we-did

Improvement works

From time to time it is essential to undertake improvement works. Everyone's journey is different – please check before you travel, especially if you are travelling late at night or at the weekend. The latest updated information is available at nationalrail.co.uk

Off-Peak travel

Certain Off-Peak tickets are not valid on services departing London Euston 1649–1900 or departing Birmingham 1635–1800 Mondays to Fridays. Please check before you travel.

Bank Holidays

Generally, a Saturday level of service applies on Bank Holidays, except for Christmas Day and Boxing Day. Please double check ahead of each bank holiday at wmr.uk/plan

Valid from 15 December 2025
to 15 May 2026

Mondays to Fridays

| | LN | AWC | LN | WM | AWC | XC | AWC | LN | WM | AWC | LN | TfW | AWC | WM | XC | LN | AWC | AWC | LN | WM | LN | TfW | AWC | WM | XC | LN |
|------------------------------|----|------|------|-------|------|------|------|------|-------|------|------|-------|------|-------|------|------|------|------|----|-------|------|-------|------|-------|------|------|
| ➔ Birmingham New St d | | 0530 | 0535 | 0538 | 0550 | 0602 | 0605 | 0613 | 0616 | 0628 | 0636 | 0639 | 0647 | 0650 | 0703 | 0706 | 0717 | 0721 | | 0724 | 0736 | 0739 | 0747 | 0750 | 0803 | 0806 |
| ➔ Adderley Park d | | | | | | | | | 0620 | 0628 | | | | 0655 | 0703 | | | | | 0724 | 0736 | | | 0750 | | |
| ➔ Stechford d | | | | 0545 | | | | | 0624 | | | | | 0659 | | | | | | 0731 | | | | 0758 | | |
| ➔ Lea Hall d | | | | 0548 | | | | | 0627 | | | | | 0702 | | | | | | 0734 | | | | 0801 | | |
| ➔ Marston Green d | | | | 0551 | | | | | 0631 | | | | | 0705 | | | | | | 0738 | | | | 0805 | | |
| ➔ Birmingham International d | | 0541 | 0545 | 0555a | 0600 | 0613 | 0616 | 0625 | 0634a | 0639 | 0646 | 0651a | 0658 | 0709a | 0713 | 0716 | 0728 | 0733 | | 0741a | 0746 | 0752a | 0758 | 0808a | 0813 | 0816 |
| ➔ Hampton-in-Arden d | | | | 0548 | | | | 0628 | | 0650 | | | | | 0720 | | | | | 0741a | 0746 | | | 0808a | 0813 | 0816 |
| ➔ Berkswell d | | | | 0553 | | | | 0633 | | 0654 | | | | | 0724 | | | | | 0741a | 0746 | | | 0808a | 0813 | 0816 |
| ➔ Tile Hill d | | | | 0557 | | | | 0637 | | 0658 | | | | | 0728 | | | | | 0741a | 0746 | | | 0808a | 0813 | 0816 |
| ➔ Canley d | | | | 0600 | | | | 0640 | | 0701 | | | | | 0731 | | | | | 0741a | 0746 | | | 0808a | 0813 | 0816 |
| ➔ Coventry d | | 0539 | 0552 | 0604 | 0612 | 0626 | 0628 | 0644 | 0650 | 0705 | 0710 | | 0726 | 0735 | 0740 | 0745 | | | | 0741a | 0746 | | | 0808a | 0813 | 0816 |
| ➔ Rugby d | | 0552 | 0604 | 0615 | | | | 0656 | 0701 | 0716 | | | | 0746 | | 0756 | 0802 | | | 0741a | 0746 | | | 0808a | 0813 | 0816 |
| ➔ Long Buckby d | | 0602 | | 0625 | | | | 0707 | | 0726 | | | | 0756 | | 0802 | | | | 0741a | 0746 | | | 0808a | 0813 | 0816 |
| ➔ Northampton a | | 0613 | | 0637 | | | | 0719 | | 0739 | | | | 0807 | | 0827 | | | | 0741a | 0746 | | | 0808a | 0813 | 0816 |
| ➔ London Euston a | | 0710 | 0703 | 0738 | 0718 | 0731 | 0821 | 0757 | 0848 | 0808 | | | | 0917 | 0838 | 0852 | 0922 | | | 0741a | 0746 | | | 0808a | 0813 | 0816 |

| | AWC | AWC | WM | LN | TfW | AWC | WM | XC | LN | AWC | AWC | WM | LN | TfW | AWC | WM | XC | LN | AWC | AWC | WM | LN | TfW | AWC | WM | XC |
|------------------------------|------|------|-------|------|-------|------|-------|------|------|------|------|-------|------|-------|------|-------|------|------|------|------|-------|------|-------|------|-------|------|
| ➔ Birmingham New St d | 0817 | 0821 | 0824 | 0836 | 0839 | 0847 | 0850 | 0903 | 0906 | 0917 | 0921 | 0924 | 0936 | 0939 | 0947 | 0950 | 1003 | 1006 | 1017 | 1021 | 1024 | 1036 | 1039 | 1047 | 1050 | 1103 |
| ➔ Adderley Park d | | | | | | | 0854 | | | | | | | | 0954 | | | | | 1024 | 1036 | | | 1050 | | |
| ➔ Stechford d | | | 0831 | | | | 0858 | | | | | 0931 | | | 0958 | | | | | 1024 | 1036 | | | 1050 | | |
| ➔ Lea Hall d | | | 0834 | | | | 0901 | | | | | 0934 | | | 1001 | | | | | 1034 | 1036 | | | 1101 | | |
| ➔ Marston Green d | | | 0838 | | | | 0905 | | | | | 0938 | | | 1005 | | | | | 1038 | 1036 | | | 1101 | | |
| ➔ Birmingham International d | 0828 | 0833 | 0841a | 0846 | 0851a | 0858 | 0908a | 0913 | 0916 | 0928 | 0933 | 0941a | 0946 | 0952a | 0958 | 1008a | 1013 | 1016 | 1028 | 1033 | 1041a | 1046 | 1052a | 1058 | 1108a | 1113 |
| ➔ Hampton-in-Arden d | | | | 0850 | | | | 0920 | | 0950 | | | | | 1020 | | | | | 1038 | 1036 | | | 1101 | | |
| ➔ Berkswell d | | | | 0854 | | | | 0924 | | 0954 | | | | | 1024 | | | | | 1038 | 1036 | | | 1101 | | |
| ➔ Tile Hill d | | | | 0858 | | | | 0928 | | 0958 | | | | | 1028 | | | | | 1038 | 1036 | | | 1101 | | |
| ➔ Canley d | | | | 0901 | | | | 0931 | | 1001 | | | | | 1031 | | | | | 1038 | 1036 | | | 1101 | | |
| ➔ Coventry d | 0840 | 0845 | 0905 | 0916 | 0910 | 0926 | 0935 | 0940 | 0945 | 1005 | 1010 | 1026 | 1035 | 1040 | 1045 | 1105 | 1110 | 1126 | | 1038 | 1036 | | | 1101 | | |
| ➔ Rugby d | | 0856 | 0916 | 0926 | | | 0946 | 0956 | 1016 | 1026 | 1038 | 1046 | 1056 | 1116 | 1126 | | | | | 1038 | 1036 | | | 1101 | | |
| ➔ Long Buckby d | | | 0926 | 0938 | | | 1007 | 1038 | 1046 | 1056 | 1116 | 1126 | | | 1101 | | | | | 1038 | 1036 | | | 1101 | | |
| ➔ Northampton a | | | 0938 | 1006 | | | 1117 | 1038 | 1054 | 1150 | 1106 | 1217 | 1138 | 1154 | 1250 | 1206 | | | | 1038 | 1036 | | | 1101 | | |
| ➔ London Euston a | 0941 | 0954 | 1050 | 1006 | | | 1117 | 1038 | 1054 | 1150 | 1106 | 1217 | 1138 | 1154 | 1250 | 1206 | | | | 1038 | 1036 | | | 1101 | | |

| | LN | AWC | AWC | WM | LN | TfW | AWC | WM | XC | LN | AWC | AWC | WM | LN | TfW | AWC | WM | XC | LN | AWC | AWC | WM | LN | TfW | AWC | WM |
|------------------------------|------|------|------|-------|------|-------|------|-------|------|------|------|------|-------|------|-------|------|-------|------|------|------|------|-------|------|-------|------|-------|
| ➔ Birmingham New St d | 1106 | 1117 | 1121 | 1124 | 1136 | 1139 | 1147 | 1150 | 1203 | 1206 | 1217 | 1221 | 1224 | 1236 | 1239 | 1247 | 1250 | 1303 | 1306 | 1317 | 1321 | 1324 | 1336 | 1339 | 1347 | 1350 |
| ➔ Adderley Park d | | | | | | | | 1154 | | | | | | | | 1254 | | | | 1324 | 1336 | | | 1350 | | |
| ➔ Stechford d | | | | 1131 | | | | 1158 | | | | | 1231 | | | 1258 | | | | 1324 | 1336 | | | 1350 | | |
| ➔ Lea Hall d | | | | 1134 | | | | 1201 | | | | | 1234 | | | 1301 | | | | 1324 | 1336 | | | 1350 | | |
| ➔ Marston Green d | | | | 1138 | | | | 1205 | | | | | 1238 | | | 1305 | | | | 1324 | 1336 | | | 1350 | | |
| ➔ Birmingham International d | 1116 | 1128 | 1133 | 1141a | 1146 | 1151a | 1158 | 1208a | 1213 | 1216 | 1228 | 1233 | 1241a | 1246 | 1252a | 1258 | 1308a | 1313 | 1316 | 1328 | 1333 | 1341a | 1346 | 1353a | 1358 | 1408a |
| ➔ Hampton-in-Arden d | 1120 | | | 1150 | | | | 1220 | | 1250 | | | | | 1320 | | | | | 1328 | 1336 | | | 1350 | | |
| ➔ Berkswell d | 1124 | | | 1154 | | | | 1224 | | 1254 | | | | | 1324 | | | | | 1328 | 1336 | | | 1350 | | |
| ➔ Tile Hill d | 1128 | | | 1158 | | | | 1228 | | 1258 | | | | | 1328 | | | | | 1328 | 1336 | | | 1350 | | |
| ➔ Canley d | 1131 | | | 1201 | | | | 1231 | | 1301 | | | | | 1331 | | | | | 1328 | 1336 | | | 1350 | | |
| ➔ Coventry d | 1135 | 1140 | 1145 | 1205 | 1210 | 1226 | 1235 | 1240 | 1245 | 1305 | 1310 | 1326 | 1335 | 1340 | 1345 | 1405 | 1410 | | | 1328 | 1336 | | | 1350 | | |
| ➔ Rugby d | 1146 | | 1156 | 1216 | | | 1246 | 1256 | 1316 | 1326 | 1336 | 1346 | 1356 | 1416 | 1426 | | | | | 1328 | 1336 | | | 1350 | | |
| ➔ Long Buckby d | 1156 | | | 1226 | | | 1256 | 1326 | 1336 | 1346 | 1356 | 1416 | 1426 | | | | | | | 1328 | 1336 | | | 1350 | | |
| ➔ Northampton a | 1208 | | | 1238 | | | 1308 | 1338 | 1348 | 1408 | 1418 | 1428 | 1437 | | | | | | | 1328 | 1336 | | | 1350 | | |
| ➔ London Euston a | 1317 | 1238 | 1254 | 1350 | 1306 | | 1417 | 1338 | 1354 | 1450 | 1406 | 1517 | 1438 | 1454 | 1550 | 1506 | | | | 1328 | 1336 | | | 1350 | | |

Notes & Symbols

- ➔ PlusBus add-on tickets available
- ➔ Connection with West Midlands Metro
- First Class accommodation available
- a Arrival time
- d Departure time

AWC Service operated by Avanti West Coast
 LN Service operated by London Northwestern Railway
 TfW Service operated by Transport for Wales
 WM Service operated by West Midlands Railway
 XC Service operated by CrossCountry

Passengers will need to hold a valid ticket for travel by these services.
 Tickets shown WMR/LNR services only are not valid.

Valid from 15 December 2025 to 15 May 2026

Mondays to Fridays

| | XC | LN | AWC | AWC | WM | LN | TfW | AWC | WM | XC | LN | AWC | AWC | WM | LN | TfW | AWC | WM | XC | LN | AWC | AWC | WM | LN | TfW | AWC |
|------------------------------|------|------|------|------|-------|------|-------|------|-------|------|------|------|------|-------|------|-------|------|-------|------|------|------|------|-------|------|-------|------|
| ➔ Birmingham New St d | 1403 | 1406 | 1417 | 1421 | 1424 | 1436 | 1439 | 1447 | 1450 | 1503 | 1506 | 1517 | 1521 | 1524 | 1536 | 1539 | 1547 | 1550 | 1603 | 1606 | 1617 | 1621 | 1624 | 1636 | 1639 | 1647 |
| ➔ Adderley Park d | | | | | | | | | 1454 | | | | | | | | 1554 | | | | | | | | | |
| ➔ Stechford d | | | | | 1431 | | | | 1458 | | | | | 1531 | | | 1558 | | | | | | 1631 | | | |
| ➔ Lea Hall d | | | | | 1434 | | | | 1501 | | | | | 1534 | | | 1601 | | | | | | 1634 | | | |
| ➔ Marston Green d | | | | | 1438 | | | | 1505 | | | | | 1538 | | | 1605 | | | | | | 1638 | | | |
| ➔ Birmingham International d | 1413 | 1416 | 1428 | 1433 | 1441a | 1446 | 1451a | 1458 | 1508a | 1513 | 1516 | 1528 | 1533 | 1541a | 1546 | 1553a | 1558 | 1608a | 1613 | 1616 | 1628 | 1633 | 1641a | 1646 | 1652a | 1658 |
| ➔ Hampton-in-Arden d | | 1420 | | | | 1450 | | | | | 1520 | | | | 1550 | | | | | 1620 | | | | 1650 | | |
| ➔ Berkswell d | | 1424 | | | | 1454 | | | | | 1524 | | | | 1554 | | | | | 1624 | | | | 1654 | | |
| ➔ Tile Hill d | | 1428 | | | | 1458 | | | | | 1528 | | | | 1558 | | | | | 1628 | | | | 1658 | | |
| ➔ Canley d | | 1431 | | | | 1501 | | | | | 1531 | | | | 1601 | | | | | 1631 | | | | 1701 | | |
| ➔ Coventry d | 1426 | 1435 | 1440 | 1445 | | 1505 | 1510 | | 1526 | 1535 | 1540 | 1545 | | 1605 | | 1610 | | 1626 | 1635 | 1640 | 1645 | | 1705 | | 1710 | |
| ➔ Rugby d | | 1446 | | 1456 | | 1516 | | | | | 1546 | | 1556 | | 1616 | | | | | 1646 | | 1656 | | 1716 | | |
| ➔ Long Buckby d | | 1456 | | | | 1526 | | | | | 1556 | | | | 1626 | | | | | 1656 | | | | 1726 | | |
| ➔ Northampton a | | 1509 | | | | 1539 | | | | | 1608 | | | | 1637 | | | | | 1708 | | | | 1741 | | |
| ➔ London Euston a | | 1617 | 1540 | 1554 | | 1650 | | 1607 | | | 1717 | 1639 | 1654 | | 1750 | | 1706 | | | 1818 | 1738 | 1754 | | 1850 | | 1808 |

| | WM | XC | LN | AWC | AWC | WM | LN | TfW | AWC | WM | XC | LN | AWC | AWC | WM | LN | TfW | AWC | WM | XC | LN | AWC | WM | LN | TfW | AWC |
|------------------------------|-------|------|------|------|------|-------|------|-------|------|-------|------|------|------|------|-------|------|-------|------|-------|------|------|------|-------|------|-------|------|
| ➔ Birmingham New St d | 1650 | 1703 | 1706 | 1717 | 1721 | 1724 | 1736 | 1739 | 1747 | 1750 | 1803 | 1806 | 1817 | 1821 | 1824 | 1836 | 1839 | 1847 | 1850 | 1903 | 1906 | 1921 | 1924 | 1936 | 1939 | 1947 |
| ➔ Adderley Park d | | 1654 | | | | | | | | 1754 | | | | | | | | | 1854 | | | | | | | |
| ➔ Stechford d | | 1658 | | | | 1731 | | | | 1758 | | | | | 1831 | | | | 1858 | | | | 1931 | | | |
| ➔ Lea Hall d | | 1701 | | | | 1734 | | | | 1801 | | | | | 1834 | | | | 1901 | | | | 1934 | | | |
| ➔ Marston Green d | | 1705 | | | | 1738 | | | | 1805 | | | | | 1838 | | | | 1905 | | | | 1938 | | | |
| ➔ Birmingham International d | 1708a | 1713 | 1716 | 1728 | 1733 | 1741a | 1746 | 1751a | 1758 | 1808a | 1813 | 1816 | 1828 | 1833 | 1841a | 1846 | 1851a | 1858 | 1908a | 1913 | 1916 | 1933 | 1941a | 1946 | 1952a | 1958 |
| ➔ Hampton-in-Arden d | | | 1720 | | | | 1750 | | | | | 1820 | | | | 1850 | | | | 1920 | | | | 1950 | | |
| ➔ Berkswell d | | | 1724 | | | | 1754 | | | | | 1824 | | | | 1854 | | | | 1924 | | | | 1954 | | |
| ➔ Tile Hill d | | | 1728 | | | | 1758 | | | | | 1828 | | | | 1858 | | | | 1928 | | | | 1958 | | |
| ➔ Canley d | | | 1731 | | | | 1801 | | | | | 1831 | | | | 1901 | | | | 1931 | | | | 2001 | | |
| ➔ Coventry d | | 1726 | 1735 | 1740 | 1745 | | 1805 | 1810 | | 1826 | 1835 | 1840 | 1845 | | 1905 | | 1910 | | 1926 | 1935 | 1945 | | 2005 | | 2010 | |
| ➔ Rugby d | | | 1746 | | 1755 | | 1816 | | | | 1846 | | 1856 | | 1916 | | | | | 1946 | 1956 | | | 2016 | | |
| ➔ Long Buckby d | | | 1756 | | | | 1826 | | | | 1856 | | | | 1926 | | | | | 1956 | | | | 2026 | | |
| ➔ Northampton a | | | 1808 | | | | 1837 | | | | 1907 | | | | 1938 | | | | | 2008 | | | | 2038 | | |
| ➔ London Euston a | | | 1917 | 1839 | 1856 | | 1950 | | 1906 | | 2017 | 1938 | 1954 | | 2050 | | 2006 | | | 2117 | 2054 | | | 2150 | | 2106 |

| | WM | XC | LN | AWC | WM | LN | TfW | WM | XC | AWC | LN | WM | LN | LN | WM | XC | LN | AWC | WM | TfW | LN | LN | AWC | AWC | WM | LN | WM | |
|------------------------------|-------|------|------|------|-------|------|-------|-------|------|------|------|-------|------|----|-------|------|------|------|-------|-------|-------|-------|-------|-------|-------|------|------|------|
| ➔ Birmingham New St d | 1950 | 2003 | 2006 | 2021 | 2024 | 2036 | 2039 | 2050 | 2103 | 2111 | 2115 | 2124 | 2136 | | 2147 | 2203 | 2206 | 2217 | 2224 | 2238 | | FX | FO | FX | FO | 2321 | 2350 | 0041 |
| ➔ Adderley Park d | | 1954 | | | | | | 2054 | | | | 2128 | | | 2151 | | | | 2228 | 2254 | 2254 | | | | | 2326 | 2354 | |
| ➔ Stechford d | | 1958 | | | | 2031 | | 2058 | | | | 2132 | | | 2155 | | | | 2232 | 2258 | 2258 | | | | | 2330 | 2359 | |
| ➔ Lea Hall d | | 2001 | | | | 2034 | | 2101 | | | | 2135 | | | 2158 | | | | 2235 | 2301 | 2301 | | | | | 2333 | 0003 | 0048 |
| ➔ Marston Green d | | 2005 | | | | 2038 | | 2105 | | | | 2139 | | | 2202 | | | | 2239 | 2305 | 2305 | | | | | 2336 | 0006 | 0051 |
| ➔ Birmingham International d | 2008a | 2013 | 2016 | 2033 | 2041a | 2046 | 2053a | 2108a | 2113 | 2122 | 2126 | 2142a | 2146 | | 2205a | 2213 | 2216 | 2228 | 2242a | 2252a | 2309 | 2309 | 2322 | 2322 | 2340 | 0010 | 0055 | |
| ➔ Hampton-in-Arden d | | | 2020 | | | | 2050 | | | | | 2130 | 2150 | | | | | | 2220 | 2312 | 2312 | | | | | 2343 | 0013 | 0058 |
| ➔ Berkswell d | | | 2024 | | | | 2054 | | | | | 2134 | 2154 | | | | | | 2225 | 2317 | 2317 | | | | | 2348 | 0018 | 0103 |
| ➔ Tile Hill d | | | 2028 | | | | 2058 | | | | | 2138 | 2158 | | | | | | 2229 | 2321 | 2321 | | | | | 2352 | 0022 | 0106 |
| ➔ Canley d | | | 2031 | | | | 2101 | | | | | 2141 | 2201 | | | | | | 2232 | 2324 | 2324 | | | | | 2355 | 0025 | 0110 |
| ➔ Coventry d | | 2026 | 2035 | 2045 | | 2105 | | 2126 | 2134 | 2145 | | 2205 | | | 2226 | 2235 | 2240 | | 2327 | 2327 | 2334 | 2334 | 2358a | 0028a | 0112a | | | |
| ➔ Rugby d | | | 2046 | 2056 | | 2116 | | | | 2156 | | 2216 | 2227 | | 2246 | 2251 | | | 2338 | 2338 | 2345 | 2345 | | | | | | |
| ➔ Long Buckby d | | | 2056 | | | 2126 | | | | 2206 | | 2226 | 2239 | | 2256 | | | | 2348 | 2348 | | | | | | | | |
| ➔ Northampton a | | | 2107 | | | 2140 | | | | 2218 | | 2237 | 2251 | | 2309 | | | | 2359 | 0002 | 0008s | 0008s | | | | | | |
| ➔ London Euston a | | | | 2154 | | 2253 | | | | 2247 | | 0011 | | | 0049 | 0018 | | | | | | | 0117 | 0120 | | | | |

Notes & Symbols

- ➔ PlusBus add-on tickets available
- ➔ Connection with West Midlands Metro
- First Class accommodation available

- a Arrival time
- d Departure time
- s Stops to set down only

- AWC Service operated by Avanti West Coast
- LN Service operated by London Northwestern Railway
- TfW Service operated by Transport for Wales
- WM Service operated by West Midlands Railway
- XC Service operated by CrossCountry

- FO Runs Fridays only
- FX Runs Mondays to Thursdays only
- TS Runs Tuesday to Saturday mornings only

Passengers will need to hold a valid ticket for travel by these services.
 Tickets shown WMR/LNR services only are not valid.

Valid from 20 December 2025
to 16 May 2026

Saturdays

| | LN | LN | WM | AWC | XC | AWC | LN | WM | AWC | LN | TfW | AWC | WM | XC | LN | AWC | AWC | WM | LN | TfW | AWC | WM | XC | LN | AWC | AWC |
|------------------------------|------|------|-------|------|------|------|------|-------|------|------|-------|------|-------|------|------|------|------|-------|------|-------|------|-------|------|------|------|------|
| ➔ Birmingham New St d | | 0535 | 0538 | 0550 | 0603 | 0606 | 0613 | 0616 | 0628 | 0636 | 0639 | 0647 | 0650 | 0703 | 0706 | 0717 | 0721 | 0724 | 0736 | 0739 | 0747 | 0750 | 0803 | 0806 | 0817 | 0821 |
| ➔ Adderley Park d | | | | | | | | 0620 | | | | | 0655 | | | | | | | | | 0754 | | | | |
| ➔ Stechford d | | | 0545 | | | | | 0624 | | | | | 0659 | | | | 0731 | | | | | 0758 | | | | |
| ➔ Lea Hall d | | | 0548 | | | | | 0627 | | | | | 0702 | | | | 0734 | | | | | 0801 | | | | |
| ➔ Marston Green d | | | 0551 | | | | | 0631 | | | | | 0705 | | | | 0738 | | | | | 0805 | | | | |
| ➔ Birmingham International d | | 0546 | 0555a | 0600 | 0613 | 0617 | 0624 | 0634a | 0639 | 0646 | 0651a | 0658 | 0709a | 0713 | 0716 | 0728 | 0733 | 0741a | 0746 | 0752a | 0758 | 0808a | 0813 | 0816 | 0828 | 0833 |
| ➔ Hampton-in-Arden d | | 0549 | | | | | 0627 | | | 0650 | | | | | 0720 | | | 0750 | | | | | | | 0820 | |
| ➔ Berkswell d | | 0554 | | | | | 0632 | | | 0654 | | | | | 0724 | | | 0754 | | | | | | | 0824 | |
| ➔ Tile Hill d | | 0558 | | | | | 0636 | | | 0658 | | | | | 0728 | | | 0758 | | | | | | | 0828 | |
| ➔ Canley d | | 0601 | | | | | 0639 | | | 0701 | | | | | 0731 | | | 0801 | | | | | | | 0831 | |
| ➔ Coventry d | 0536 | 0605 | 0612 | 0626 | 0629 | 0643 | 0650 | 0705 | 0710 | 0726 | 0735 | 0740 | 0745 | 0805 | 0810 | 0826 | 0835 | 0840 | 0845 | | | | | | | |
| ➔ Rugby d | 0546 | 0616 | 0623 | | 0654 | 0701 | 0716 | | | 0746 | 0756 | | | 0816 | | | 0846 | | | | | | | | 0856 | |
| ➔ Long Buckley d | 0556 | 0627 | | | 0704 | 0727 | | | | 0757 | | | | 0827 | | | 0857 | | | | | | | | | |
| ➔ Northampton a | 0608 | 0638 | | | 0716 | 0740 | | | | 0809 | | | | 0839 | | | 0909 | | | | | | | | | |
| ➔ London Euston a | 0709 | 0741 | 0718 | 0735 | 0817 | 0756 | 0849 | 0806 | | 0917 | 0838 | 0854 | 0949 | 0907 | 1017 | 0938 | 0954 | | | | | | | | | |

| | WM | LN | TfW | AWC | WM | XC | LN | AWC | AWC | WM | LN | TfW | AWC | WM | XC | LN | AWC | AWC | WM | LN | TfW | AWC | WM | XC | LN | AWC |
|------------------------------|-------|------|-------|------|-------|------|------|------|------|-------|------|-------|------|-------|------|------|------|------|-------|------|-------|------|-------|------|------|------|
| ➔ Birmingham New St d | 0824 | 0836 | 0839 | 0847 | 0850 | 0903 | 0906 | 0917 | 0921 | 0924 | 0936 | 0939 | 0947 | 0950 | 1003 | 1006 | 1017 | 1021 | 1024 | 1036 | 1039 | 1047 | 1050 | 1103 | 1106 | 1117 |
| ➔ Adderley Park d | | | | | 0854 | | | | | | | | 0954 | | | | | | | | | | 1054 | | | |
| ➔ Stechford d | 0831 | | | | 0858 | | | | | 0931 | | | 0958 | | | | 1031 | | | | | | 1058 | | | |
| ➔ Lea Hall d | 0834 | | | | 0901 | | | | | 0934 | | | 1001 | | | | 1034 | | | | | | 1101 | | | |
| ➔ Marston Green d | 0838 | | | | 0905 | | | | | 0938 | | | 1005 | | | | 1038 | | | | | | 1105 | | | |
| ➔ Birmingham International d | 0841a | 0846 | 0851a | 0858 | 0908a | 0913 | 0916 | 0928 | 0933 | 0941a | 0946 | 0952a | 0958 | 1008a | 1013 | 1016 | 1028 | 1033 | 1041a | 1046 | 1052a | 1058 | 1108a | 1113 | 1116 | 1128 |
| ➔ Hampton-in-Arden d | 0850 | | | | | 0920 | | | | 0950 | | | | | 1020 | | | 1050 | | | | | | | 1120 | |
| ➔ Berkswell d | 0854 | | | | | 0924 | | | | 0954 | | | | | 1024 | | | 1054 | | | | | | | 1124 | |
| ➔ Tile Hill d | 0858 | | | | | 0928 | | | | 0958 | | | | | 1028 | | | 1058 | | | | | | | 1128 | |
| ➔ Canley d | 0901 | | | | | 0931 | | | | 1001 | | | | | 1031 | | | 1101 | | | | | | | 1131 | |
| ➔ Coventry d | 0905 | 0910 | 0926 | 0935 | 0940 | 0945 | 1005 | 1010 | 1026 | 1035 | 1040 | 1045 | 1105 | 1110 | 1126 | 1135 | 1140 | | | | | | | | | |
| ➔ Rugby d | 0916 | | | | 0946 | 0956 | 1016 | | | 1046 | 1056 | 1116 | | | 1146 | | | | | | | | | | 1146 | |
| ➔ Long Buckley d | 0927 | | | | 0957 | 1027 | | | | 1057 | 1127 | | | | 1157 | | | | | | | | | | 1157 | |
| ➔ Northampton a | 0939 | | | | 1009 | 1039 | | | | 1109 | 1139 | | | | 1209 | | | | | | | | | | 1209 | |
| ➔ London Euston a | 1049 | 1006 | 1117 | 1038 | 1054 | 1149 | 1106 | 1217 | 1138 | 1154 | 1249 | 1206 | 1317 | 1238 | | | | | | | | | | | 1317 | 1238 |

| | AWC | WM | LN | TfW | AWC | WM | XC | LN | AWC | AWC | WM | LN | TfW | AWC | WM | XC | LN | AWC | AWC | WM | LN | TfW | AWC | WM | XC | LN |
|------------------------------|------|-------|------|-------|------|-------|------|------|------|------|-------|------|-------|------|-------|------|------|------|------|-------|------|-------|------|-------|------|------|
| ➔ Birmingham New St d | 1121 | 1124 | 1136 | 1139 | 1147 | 1150 | 1203 | 1206 | 1217 | 1221 | 1224 | 1236 | 1239 | 1247 | 1250 | 1303 | 1306 | 1317 | 1321 | 1324 | 1336 | 1339 | 1347 | 1350 | 1403 | 1406 |
| ➔ Adderley Park d | | | | | 1154 | | | | | | | | | 1254 | | | | | | | | | | 1354 | | |
| ➔ Stechford d | 1131 | | | | 1158 | | | | | 1231 | | | | 1258 | | | | 1331 | | | | | | 1358 | | |
| ➔ Lea Hall d | 1134 | | | | 1201 | | | | | 1234 | | | | 1301 | | | | 1334 | | | | | | 1401 | | |
| ➔ Marston Green d | 1138 | | | | 1205 | | | | | 1238 | | | | 1305 | | | | 1338 | | | | | | 1405 | | |
| ➔ Birmingham International d | 1133 | 1141a | 1146 | 1151a | 1158 | 1208a | 1213 | 1216 | 1228 | 1233 | 1241a | 1246 | 1253a | 1258 | 1308a | 1313 | 1316 | 1328 | 1333 | 1341a | 1346 | 1353a | 1358 | 1408a | 1413 | 1416 |
| ➔ Hampton-in-Arden d | 1150 | | | | | 1220 | | | | 1250 | | | | 1320 | | | | 1350 | | | | | | | 1420 | |
| ➔ Berkswell d | 1154 | | | | | 1224 | | | | 1254 | | | | 1324 | | | | 1354 | | | | | | | 1424 | |
| ➔ Tile Hill d | 1158 | | | | | 1228 | | | | 1258 | | | | 1328 | | | | 1358 | | | | | | | 1428 | |
| ➔ Canley d | 1201 | | | | | 1231 | | | | 1301 | | | | 1331 | | | | 1401 | | | | | | | 1431 | |
| ➔ Coventry d | 1145 | 1205 | 1210 | 1226 | 1235 | 1240 | 1245 | 1305 | 1310 | 1326 | 1335 | 1340 | 1345 | 1405 | 1410 | 1426 | 1435 | | | | | | | | | |
| ➔ Rugby d | 1156 | 1216 | | | 1246 | 1256 | 1316 | | | 1346 | 1356 | 1416 | | | 1446 | | | | | | | | | | 1446 | |
| ➔ Long Buckley d | 1227 | | | | 1257 | 1327 | | | | 1357 | 1427 | | | 1457 | | | | | | | | | | | 1457 | |
| ➔ Northampton a | 1239 | | | | 1309 | 1338 | | | | 1408 | 1439 | | | 1508 | | | | | | | | | | | 1508 | |
| ➔ London Euston a | 1254 | 1349 | 1306 | 1417 | 1338 | 1354 | 1449 | 1406 | 1517 | 1438 | 1454 | 1549 | 1506 | 1617 | | | | | | | | | | | 1617 | |

Notes & Symbols

- ➔ PlusBus add-on tickets available
- ➔ Connection with West Midlands Metro
- First Class accommodation available
- a Arrival time
- d Departure time

- AWC Service operated by Avanti West Coast
- LN Service operated by London Northwestern Railway
- TfW Service operated by Transport for Wales
- WM Service operated by West Midlands Railway
- XC Service operated by CrossCountry

Passengers will need to hold a valid ticket for travel by these services.
Tickets shown WMR/LNR services only are not valid.

Valid from 20 December 2025 to 16 May 2026

Saturdays

| | AWC | AWC | WM | LN | TfW | AWC | WM | XC | LN | AWC | AWC | WM | LN | TfW | AWC | WM | XC | LN | AWC | AWC | WM | LN | TfW | AWC | WM | XC |
|------------------------------|------|------|-------|------|-------|------|-------|------|------|------|------|-------|------|-------|------|-------|------|------|------|------|-------|------|-------|------|-------|------|
| ➔ Birmingham New St d | 1417 | 1421 | 1424 | 1436 | 1439 | 1447 | 1450 | 1503 | 1506 | 1517 | 1521 | 1524 | 1536 | 1539 | 1547 | 1550 | 1603 | 1606 | 1617 | 1621 | 1624 | 1636 | 1639 | 1647 | 1650 | 1703 |
| ➔ Adderley Park d | | | | | | | 1454 | | | | | | | | | 1554 | | | | | | | | | | 1654 |
| ➔ Stechford d | | | | 1431 | | | 1458 | | | | | 1531 | | | | 1558 | | | | | 1631 | | | | | 1658 |
| ➔ Lea Hall d | | | | 1434 | | | 1501 | | | | | 1534 | | | | 1601 | | | | | 1634 | | | | | 1701 |
| ➔ Marston Green d | | | | 1438 | | | 1505 | | | | | 1538 | | | | 1605 | | | | | 1638 | | | | | 1705 |
| ➔ Birmingham International d | 1428 | 1433 | 1441a | 1446 | 1453a | 1458 | 1508a | 1513 | 1516 | 1528 | 1533 | 1541a | 1546 | 1552a | 1558 | 1608a | 1613 | 1616 | 1628 | 1633 | 1641a | 1646 | 1652a | 1658 | 1708a | 1713 |
| ➔ Hampton-in-Arden d | | | | 1450 | | | | | 1520 | | | | 1550 | | | 1620 | | | | | 1650 | | | | | |
| ➔ Berkswell d | | | | 1454 | | | | | 1524 | | | | 1554 | | | 1624 | | | | | 1654 | | | | | |
| ➔ Tile Hill d | | | | 1458 | | | | | 1528 | | | | 1558 | | | 1628 | | | | | 1658 | | | | | |
| ➔ Canley d | | | | 1501 | | | | | 1531 | | | | 1601 | | | 1631 | | | | | 1701 | | | | | |
| ➔ Coventry d | 1440 | 1445 | | 1505 | 1510 | | 1526 | 1535 | 1540 | 1545 | | 1605 | | 1610 | | 1626 | 1635 | 1640 | 1645 | | 1705 | | 1710 | | | 1726 |
| ➔ Rugby d | | 1456 | | 1516 | | | | | 1546 | | 1556 | | 1616 | | | 1646 | | 1656 | | | 1716 | | | | | |
| ➔ Long Buckby d | | | | 1527 | | | | | 1557 | | | | 1627 | | | 1657 | | | | | 1727 | | | | | |
| ➔ Northampton a | | | | 1538 | | | | | 1608 | | | | 1639 | | | 1708 | | | | | 1739 | | | | | |
| ➔ London Euston a | 1538 | 1554 | | 1649 | | | | | 1716 | 1638 | 1654 | | 1749 | | 1706 | | | 1817 | 1738 | 1754 | | 1849 | | | | 1806 |

| | LN | AWC | AWC | WM | LN | TfW | AWC | WM | XC | LN | AWC | AWC | WM | LN | TfW | AWC | WM | XC | LN | AWC | WM | LN | TfW | WM | WM | XC |
|------------------------------|------|------|------|-------|------|-------|------|-------|------|------|------|------|-------|------|-------|------|-------|------|------|------|-------|------|-------|----|-------|------|
| ➔ Birmingham New St d | 1706 | 1717 | 1721 | 1724 | 1736 | 1739 | 1747 | 1750 | 1803 | 1806 | 1817 | 1821 | 1824 | 1836 | 1839 | 1847 | 1850 | 1903 | 1906 | 1921 | 1924 | 1936 | 1939 | | 1950 | 2003 |
| ➔ Adderley Park d | | | | | | | | 1754 | | | | | | | | | 1854 | | | | | | | | | 1954 |
| ➔ Stechford d | | | | 1731 | | | | 1758 | | | | | 1831 | | | 1858 | | | | | 1931 | | | | | 1958 |
| ➔ Lea Hall d | | | | 1734 | | | | 1801 | | | | | 1834 | | | 1901 | | | | | 1934 | | | | | 2001 |
| ➔ Marston Green d | | | | 1738 | | | | 1805 | | | | | 1838 | | | 1905 | | | | | 1938 | | | | | 2005 |
| ➔ Birmingham International d | 1716 | 1728 | 1733 | 1741a | 1746 | 1753a | 1758 | 1808a | 1813 | 1816 | 1828 | 1833 | 1841a | 1846 | 1853a | 1858 | 1908a | 1913 | 1916 | 1933 | 1941a | 1946 | 1953a | | 2008a | 2013 |
| ➔ Hampton-in-Arden d | 1720 | | | | 1750 | | | | | 1820 | | | | 1850 | | | 1920 | | | | 1950 | | | | | |
| ➔ Berkswell d | 1724 | | | | 1754 | | | | | 1824 | | | | 1854 | | | 1924 | | | | 1954 | | | | | |
| ➔ Tile Hill d | 1728 | | | | 1758 | | | | | 1828 | | | | 1858 | | | 1928 | | | | 1958 | | | | | |
| ➔ Canley d | 1731 | | | | 1801 | | | | | 1831 | | | | 1901 | | | 1931 | | | | 2001 | | | | | |
| ➔ Coventry d | 1735 | 1740 | 1745 | | 1805 | 1810 | | 1826 | 1835 | 1840 | 1845 | | 1905 | | 1910 | | 1926 | 1935 | 1945 | | 2005 | | | | | 2026 |
| ➔ Rugby d | 1746 | | 1756 | | 1816 | | | | 1846 | | 1856 | | 1916 | | | | 1946 | 1956 | | | 2016 | | 2027 | | | |
| ➔ Long Buckby d | 1757 | | | | 1827 | | | | 1857 | | | | 1927 | | | | 1957 | | | | 2027 | | | | | |
| ➔ Northampton a | 1808 | | | | 1838 | | | | 1910 | | | | 1938 | | | | 2008 | | | | 2039 | | 2046 | | | |
| ➔ London Euston a | 1917 | 1838 | 1854 | | 1949 | | 1906 | | | 2032 | 1936 | 1954 | | 2054 | | 2006 | | | 2130 | 2108 | | 2203 | | | | |

| | LN | AWC | WM | LN | TfW | WM | XC | LN | AWC | WM | LN | WM | AWC | LN | WM | LN | WM | WM |
|------------------------------|------|------|-------|------|-------|-------|------|------|------|-------|------|-------|------|------|-------|-------|-------|------|
| ➔ Birmingham New St d | 2006 | 2021 | 2024 | 2036 | 2039 | 2050 | 2103 | 2106 | 2121 | 2124 | 2136 | 2150 | 2203 | 2206 | 2220 | 2251 | 2316 | 2322 |
| ➔ Adderley Park d | | | | | | 2054 | | | | | | 2154 | | | 2224 | | | 2327 |
| ➔ Stechford d | | | | 2031 | | 2058 | | | | 2131 | | 2158 | | | 2228 | | | 2331 |
| ➔ Lea Hall d | | | | 2034 | | 2101 | | | | 2134 | | 2201 | | | 2231 | | | 2334 |
| ➔ Marston Green d | | | | 2038 | | 2105 | | | | 2138 | | 2205 | | | 2235 | 2259 | | 2337 |
| ➔ Birmingham International d | 2016 | 2033 | 2041a | 2046 | 2052a | 2108a | 2113 | 2116 | 2133 | 2141a | 2146 | 2208a | 2214 | 2216 | 2238a | 2303 | 2326 | 2341 |
| ➔ Hampton-in-Arden d | 2020 | | | 2050 | | | | 2120 | | | 2150 | | | 2220 | 2306 | 2329 | | |
| ➔ Berkswell d | 2024 | | | 2054 | | | | 2124 | | | 2154 | | | 2224 | 2311 | 2334 | | |
| ➔ Tile Hill d | 2028 | | | 2058 | | | | 2128 | | | 2158 | | | 2228 | 2315 | 2338 | | |
| ➔ Canley d | 2031 | | | 2101 | | | | 2131 | | | 2201 | | | 2232 | 2318 | 2341 | | |
| ➔ Coventry d | 2035 | 2045 | | 2105 | | 2126 | 2135 | 2145 | | 2205 | | 2226 | 2235 | | 2321 | 2344a | 2350a | |
| ➔ Rugby d | 2046 | 2056 | | 2116 | | | 2146 | 2156 | | 2216 | | 2237 | 2246 | | 2332 | | | |
| ➔ Long Buckby d | 2057 | | | 2127 | | | 2156 | | | 2227 | | 2257 | | | 2342 | | | |
| ➔ Northampton a | 2108 | | | 2138 | | | 2207 | | | 2240 | | 2308 | | | 2355 | | | |
| ➔ London Euston a | 2241 | 2214 | | 2304 | | | 2333 | 2310 | | 0015 | | 0001 | 0034 | | | | | |

Notes & Symbols

- ➔ PlusBus add-on tickets available
- ➔ Connection with West Midlands Metro
- First Class accommodation available
- a Arrival time
- d Departure time

- AWC Service operated by Avanti West Coast
- LN Service operated by London Northwestern Railway
- TfW Service operated by Transport for Wales
- WM Service operated by West Midlands Railway
- XC Service operated by CrossCountry

Passengers will need to hold a valid ticket for travel by these services.
 Tickets shown WMR/LNR services only are not valid.

Valid from 14 December 2025
to 10 May 2026

Sundays

| | AWC | LN | AWC | XC | LN | TfW | AWC | LN | XC | LN | TfW | AWC | LN | LN | WM | XC | LN | AWC | LN | TfW | AWC | WM | XC | LN | AWC | AWC |
|-------------------------------|------|------|------|------|------|-------|------|------|------|------|-------|------|------|------|-------|------|------|------|------|-------|------|-------|------|------|------|------|
| ➔➔ Birmingham New St d | 0826 | 0833 | 0856 | 0903 | 0907 | 0919 | 0930 | 0934 | 1003 | 1006 | 1022 | 1030 | | 1034 | 1050 | 1103 | 1106 | 1126 | 1133 | 1139 | 1147 | 1150 | 1203 | 1206 | 1217 | 1221 |
| ➔➔ Adderley Park d | | | | | 0911 | | | | | | | | | | 1054 | | | | | | | 1154 | | | | |
| ➔➔ Stechford d | | 0840 | | | 0915 | | | 0941 | | 1013 | | | | | 1058 | | | | | | | 1158 | | | | |
| ➔➔ Lea Hall d | | 0842 | | | 0918 | | | 0944 | | 1016 | | | | | 1101 | | | | | | | 1201 | | | | |
| ➔➔ Marston Green d | | 0846 | | | 0922 | | | 0947 | | 1020 | | | | 1042 | 1105 | | | 1141 | | | | 1205 | | | | |
| ➔➔ Birmingham International d | 0837 | 0849 | 0908 | 0913 | 0925 | 0930a | 0941 | 0951 | 1013 | 1023 | 1034a | 1041 | | 1046 | 1108a | 1113 | 1116 | 1137 | 1146 | 1151a | 1158 | 1208a | 1213 | 1216 | 1228 | 1233 |
| ➔➔ Hampton-in-Arden d | | 0853 | | | | | | 0954 | | | | | | 1049 | | | 1120 | | | | 1150 | | | | 1220 | |
| ➔➔ Berkswell d | | 0857 | | | 0931 | | | 0959 | | | | | | 1054 | | | 1124 | | | | 1154 | | | | 1224 | |
| ➔➔ Tile Hill d | | 0901 | | | 0935 | | | 1003 | | 1032 | | | | 1058 | | | 1128 | | | | 1158 | | | | 1228 | |
| ➔➔ Canley d | | 0904 | | | 0939 | | | 1006 | | | | | | 1101 | | | 1131 | | | | 1201 | | | | 1231 | |
| ➔➔ Coventry d | 0849 | 0908 | 0919 | 0926 | 0944 | | 0953 | 1010 | 1026 | 1037 | | 1053 | | 1108 | | 1126 | 1135 | 1149 | 1205 | | 1210 | | 1226 | 1235 | 1240 | 1245 |
| ➔➔ Rugby d | 0900 | 0919 | | | 0955 | | 1004 | 1020 | | 1047 | | 1104 | 1115 | 1121 | | | 1148 | 1200 | 1216 | | | | | 1246 | | 1256 |
| ➔➔ Long Buckby d | | 0929 | | | 1005 | | | 1030 | | 1057 | | | | 1131 | | | 1158 | | | | 1226 | | | | 1256 | |
| ➔➔ Northampton a | | 0942 | | | 1018 | | | 1041 | | 1108 | | | | 1135 | 1145 | | 1210 | | | | 1237 | | | | 1307 | |
| ➔➔ London Euston a | 1028 | | 1056 | | 1148 | | 1134 | 1203 | | 1228 | | 1223 | 1242 | 1251 | | | 1315 | 1257 | 1350 | | 1309 | | | 1415 | 1339 | 1355 |

| | XC | LN | TfW | AWC | WM | XC | LN | AWC | AWC | LN | TfW | AWC | WM | XC | LN | AWC | AWC | LN | TfW | AWC | WM | XC | LN | AWC | AWC | LN |
|-------------------------------|------|------|-------|------|-------|------|------|------|------|------|-------|------|-------|------|------|------|------|------|-------|------|-------|------|------|------|------|------|
| ➔➔ Birmingham New St d | 1230 | 1233 | 1239 | 1247 | 1250 | 1303 | 1306 | 1317 | 1321 | 1333 | 1339 | 1347 | 1350 | 1403 | 1406 | 1417 | 1421 | 1433 | 1439 | 1447 | 1450 | 1503 | 1506 | 1517 | 1521 | 1533 |
| ➔➔ Adderley Park d | | | | | 1254 | | | | | | | | 1354 | | | | | | | | 1454 | | | | | |
| ➔➔ Stechford d | | | | | 1258 | | | | | | | | 1358 | | | | | | | | 1458 | | | | | |
| ➔➔ Lea Hall d | | | | | 1301 | | | | | | | | 1401 | | | | | | | | 1501 | | | | | |
| ➔➔ Marston Green d | | 1241 | | | 1305 | | | | | 1341 | | | 1405 | | | | | 1441 | | | 1505 | | | | | 1541 |
| ➔➔ Birmingham International d | 1241 | 1246 | 1252a | 1258 | 1308a | 1313 | 1316 | 1328 | 1333 | 1346 | 1351a | 1358 | 1408a | 1413 | 1416 | 1428 | 1433 | 1446 | 1452a | 1458 | 1508a | 1513 | 1516 | 1528 | 1533 | 1546 |
| ➔➔ Hampton-in-Arden d | | 1250 | | | | | 1320 | | | 1350 | | | 1420 | | | | 1449 | | | | 1520 | | | | 1550 | |
| ➔➔ Berkswell d | | 1254 | | | | | 1324 | | | 1354 | | | 1424 | | | | 1454 | | | | 1524 | | | | 1554 | |
| ➔➔ Tile Hill d | | 1258 | | | | | 1328 | | | 1358 | | | 1428 | | | | 1458 | | | | 1528 | | | | 1558 | |
| ➔➔ Canley d | | 1301 | | | | | 1331 | | | 1401 | | | 1431 | | | | 1501 | | | | 1531 | | | | 1601 | |
| ➔➔ Coventry d | 1252 | 1305 | | 1310 | | 1326 | 1335 | 1340 | 1345 | 1405 | | 1410 | | 1426 | 1435 | 1440 | 1445 | 1505 | | 1510 | | 1526 | 1535 | 1540 | 1545 | 1605 |
| ➔➔ Rugby d | | 1316 | | | | | 1346 | | 1356 | 1416 | | | 1446 | | 1457 | 1516 | | | | | 1546 | | | 1556 | 1616 | |
| ➔➔ Long Buckby d | | 1326 | | | | | 1356 | | | 1426 | | | 1456 | | | 1526 | | | | | 1556 | | | | 1626 | |
| ➔➔ Northampton a | | 1338 | | | | | 1407 | | | 1438 | | | 1507 | | | 1537 | | | | | 1607 | | | | 1637 | |
| ➔➔ London Euston a | | 1450 | | 1407 | | 1515 | 1439 | 1455 | 1550 | | 1507 | | 1615 | 1540 | 1554 | 1650 | | 1608 | | | 1715 | 1639 | 1655 | 1750 | | |

| | TfW | AWC | WM | XC | LN | AWC | AWC | LN | TfW | AWC | WM | XC | LN | AWC | AWC | LN | TfW | AWC | WM | XC | LN | AWC | AWC | LN | TfW | AWC |
|-------------------------------|-------|------|-------|------|------|------|------|------|-------|------|-------|------|------|------|------|------|-------|------|-------|------|------|------|------|------|-------|------|
| ➔➔ Birmingham New St d | 1539 | 1547 | 1550 | 1603 | 1606 | 1617 | 1621 | 1633 | 1639 | 1647 | 1650 | 1703 | 1706 | 1717 | 1721 | 1733 | 1739 | 1747 | 1750 | 1803 | 1806 | 1817 | 1821 | 1833 | 1839 | 1847 |
| ➔➔ Adderley Park d | | | 1554 | | | | | | | | 1654 | | | | | | | | 1754 | | | | | | | |
| ➔➔ Stechford d | | | 1558 | | | | | | | | 1658 | | | | | | | | 1758 | | | | | | | |
| ➔➔ Lea Hall d | | | 1601 | | | | | | | | 1701 | | | | | | | | 1801 | | | | | | | |
| ➔➔ Marston Green d | | | 1605 | | | | | 1641 | | | 1705 | | | | | 1741 | | | 1805 | | | | | 1841 | | |
| ➔➔ Birmingham International d | 1551a | 1558 | 1608a | 1613 | 1616 | 1628 | 1633 | 1646 | 1653a | 1658 | 1708a | 1713 | 1716 | 1728 | 1733 | 1746 | 1752a | 1758 | 1808a | 1813 | 1816 | 1828 | 1833 | 1846 | 1851a | 1858 |
| ➔➔ Hampton-in-Arden d | | | | | 1620 | | | 1650 | | | 1720 | | | 1750 | | | | | 1820 | | | | | 1850 | | |
| ➔➔ Berkswell d | | | | | 1624 | | | 1654 | | | 1724 | | | 1754 | | | | | 1824 | | | | | 1854 | | |
| ➔➔ Tile Hill d | | | | | 1628 | | | 1658 | | | 1728 | | | 1758 | | | | | 1828 | | | | | 1858 | | |
| ➔➔ Canley d | | | | | 1631 | | | 1701 | | | 1731 | | | 1801 | | | | | 1831 | | | | | 1901 | | |
| ➔➔ Coventry d | | 1610 | | 1626 | 1635 | 1640 | 1645 | 1705 | | 1710 | | 1726 | 1735 | 1740 | 1745 | 1805 | | 1810 | | 1826 | 1835 | 1840 | 1845 | 1905 | | 1910 |
| ➔➔ Rugby d | | | | | 1646 | | | 1716 | | | 1746 | | | 1816 | | | | | 1845 | | | | | 1916 | | |
| ➔➔ Long Buckby d | | | | | 1656 | | | 1726 | | | 1755 | | | 1826 | | | | | 1856 | | | | | 1926 | | |
| ➔➔ Northampton a | | | | | 1707 | | | 1737 | | | 1807 | | | 1837 | | | | | 1907 | | | | | 1937 | | |
| ➔➔ London Euston a | | 1707 | | | 1815 | 1739 | 1755 | 1850 | | 1807 | | 1915 | 1839 | 1855 | 1950 | | 1908 | | | | 2015 | 1939 | 1955 | 2051 | | 2007 |

Notes & Symbols

- ➔➔ PlusBus add-on tickets available
- ➔➔ Connection with West Midlands Metro
- First Class accommodation available

- a Arrival time
- d Departure time
- s Stops to set down only

- AWC Service operated by Avanti West Coast
- LN Service operated by London Northwestern Railway
- TfW Service operated by Transport for Wales
- WM Service operated by West Midlands Railway
- XC Service operated by CrossCountry

Passengers will need to hold a valid ticket for travel by these services.
Tickets shown WMR/LNR services only are not valid.

Valid from 14 December 2025
to 10 May 2026

Sundays

| | WM | XC | LN | AWC | AWC | LN | TfW | AWC | LN | WM | XC | LN | AWC | LN | TfW | LN | WM | XC | LN | AWC | LN | LN | TfW | LN | TfW | AWC |
|-------------------------------|-------|------|------|------|------|------|-------|------|------|-------|------|------|------|------|-------|------|-------|------|------|------|------|------|-------|------|-------|------|
| ➔➔ Birmingham New St d | 1850 | 1903 | 1906 | 1917 | 1922 | 1933 | 1939 | 1947 | | 1950 | 2003 | 2006 | 2021 | 2033 | 2039 | | 2048 | 2103 | 2106 | 2121 | 2136 | | 2139 | 2210 | 2218 | 2230 |
| ➔➔ Adderley Park d | 1854 | | | | | | | | | 1954 | | | | | | | 2052 | | 2111 | | | | | | 2214 | |
| ➔➔ Stechford d | 1858 | | | | | | | | | 1958 | | | | | | | 2056 | | 2115 | | | | | | 2218 | |
| ➔➔ Lea Hall d | 1901 | | | | | | | | | 2001 | | | | | | | 2059 | | 2118 | | | | | | 2221 | |
| ➔➔ Marston Green d | 1905 | | | | | 1941 | | | | 2005 | | | | 2041 | | | 2103 | | 2121 | | 2144 | | | | 2225 | |
| ➔➔ Birmingham International d | 1908a | 1913 | 1916 | 1928 | 1933 | 1946 | 1952a | 1958 | | 2008a | 2013 | 2016 | 2033 | 2046 | 2055a | | 2106a | 2113 | 2125 | 2133 | 2148 | | 2151a | 2228 | 2232a | 2241 |
| ➔➔ Hampton-in-Arden d | | | 1920 | | | 1950 | | | | | | 2019 | | 2050 | | | | | | | 2151 | | | | 2232 | |
| ➔➔ Berkswell d | | | 1924 | | | 1954 | | | | | | 2024 | | 2054 | | | | | | | 2156 | | | | 2236 | |
| ➔➔ Tile Hill d | | | 1928 | | | 1958 | | | | | | 2028 | | 2058 | | | | | | 2133 | | 2200 | | | 2240 | |
| ➔➔ Canley d | | | 1931 | | | 2001 | | | | | | 2031 | | 2101 | | | | | | | 2203 | | | | 2243 | |
| ➔➔ Coventry d | | 1926 | 1935 | 1940 | 1945 | 2005 | | 2010 | | | 2026 | 2035 | 2045 | 2105 | | | | 2126 | 2138 | 2145 | 2208 | | | 2247 | 2253 | |
| ➔➔ Rugby d | | | 1946 | | 1956 | 2016 | | 2027 | | | | 2046 | 2056 | 2116 | | 2127 | | | 2148 | 2156 | 2220 | 2225 | | 2257 | 2304 | |
| ➔➔ Long Buckby d | | | 1955 | | | 2026 | | | | | | 2056 | | 2126 | | | | | | 2158 | | 2230 | 2235 | | 2307 | |
| ➔➔ Northampton a | | | 2008 | | | 2037 | | | 2047 | | | 2108 | | 2137 | | 2147 | | | 2211 | | 2241 | 2247 | | 2319 | | |
| ➔➔ London Euston a | | | 2124 | 2037 | 2057 | | | 2107 | 2154 | | | 2246 | 2209 | | | 2316 | | | 2338 | 2322 | | | | 0046 | 0028 | |

TfW LN AWC WM

| | | | | |
|-------------------------------|-------|------|-------|-------|
| ➔➔ Birmingham New St d | 2234 | 2237 | 2256 | 2314 |
| ➔➔ Adderley Park d | | 2241 | | 2318 |
| ➔➔ Stechford d | | 2247 | | 2324 |
| ➔➔ Lea Hall d | | 2249 | | 2327 |
| ➔➔ Marston Green d | | 2253 | | 2330 |
| ➔➔ Birmingham International d | 2250a | 2256 | 2312 | 2334 |
| ➔➔ Hampton-in-Arden d | | 2300 | | 2337 |
| ➔➔ Berkswell d | | 2304 | | 2342 |
| ➔➔ Tile Hill d | | 2308 | | 2347 |
| ➔➔ Canley d | | 2311 | | 2350 |
| ➔➔ Coventry d | | 2315 | 2324 | 2353a |
| ➔➔ Rugby d | | 2326 | | 2336 |
| ➔➔ Long Buckby d | | 2337 | | |
| ➔➔ Northampton a | | 2348 | 2356s | |
| ➔➔ London Euston a | | | 0104 | |

Notes & Symbols

- ➔➔ PlusBus add-on tickets available
- ➔➔ Connection with West Midlands Metro
- ☐ First Class accommodation available
- a Arrival time
- d Departure time
- s Stops to set down only

- AWC Service operated by Avanti West Coast
- LN Service operated by London Northwestern Railway
- TfW Service operated by Transport for Wales
- WM Service operated by West Midlands Railway
- XC Service operated by CrossCountry

Passengers will need to hold a valid ticket for travel by these services.
Tickets shown WMR/LNR services only are not valid.

Valid from 15 December 2025 to 15 May 2026

Mondays to Fridays

| | WM | LN | LN | WM | LN | LN | WM | LN | TfW | WM | LN | AWC | XC | AWC | WM | LN | TfW | AWC | WM | LN | AWC | XC | AWC | WM | LN | TfW | | |
|------------------------------|------|------|----|------|------|----|------|------|------|------|------|------|------|------|------|------|------|------|------|------|------|------|------|------|------|------|------|------|
| London Euston d | | | | | | | | | | | | 0616 | | 0633 | | | | 0535 | | | 0710 | | | 0621 | 0716 | | 0738 | |
| ➔ Northampton d | 0515 | 0520 | | 0542 | 0601 | | 0606 | | | | 0642 | | | | | | | 0711 | | | 0737 | | | | | 0810 | | |
| Long Buckby d | 0526 | 0531 | | 0553 | 0612 | | 0617 | | | | 0653 | | | | | | | 0722 | | | 0750 | | | | | 0822 | | |
| ➔ Rugby d | 0537 | 0543 | | 0605 | 0624 | | 0634 | | | | 0705 | 0715 | | | | | | 0734 | | | 0801 | 0814 | | | | 0834 | | |
| ➔ Coventry d | 0533 | 0548 | | 0615 | | | 0645 | | | | 0715 | 0727 | 0730 | 0735 | | | | 0745 | | | 0806 | | | 0812 | 0826 | 0830 | 0836 | 0845 |
| Canley d | | 0551 | | 0618 | | | 0648 | | | | 0718 | | | | | | | 0748 | | | | | | 0815 | | | 0848 | |
| Tile Hill d | | 0555 | | 0622 | | | 0652 | | | | 0722 | | | | | | | 0752 | | | | | | 0819 | | | 0852 | |
| Berkswell d | | 0558 | | 0626 | | | 0655 | | | | 0725 | | | | | | | 0755 | | | | | | 0823 | | | 0855 | |
| Hampton-in-Arden d | | 0603 | | 0630 | | | 0700 | | | | 0730 | | | | | | | 0800 | | | | | | 0827 | | | 0900 | |
| ➔ Birmingham International d | 0542 | 0606 | | 0621 | 0634 | | 0651 | 0704 | 0708 | 0721 | 0734 | 0738 | 0741 | 0746 | 0751 | 0803 | 0808 | 0816 | 0821 | 0831 | 0837 | 0841 | 0847 | 0851 | 0904 | 0908 | | |
| Marston Green d | 0546 | | | 0624 | | | 0654 | | | 0724 | | | | | | | | 0754 | 0807 | | | | | 0824 | | 0854 | | |
| Lea Hall d | 0549 | | | 0628 | | | 0658 | | | 0728 | | | | | | | | 0758 | | | | | | 0828 | | 0858 | | |
| Stechford d | 0552 | | | 0631 | | | 0701 | | | 0731 | | | | | | | | 0801 | | | | | | 0831 | | 0901 | | |
| Adderley Park d | 0557 | | | 0634 | | | 0704 | | | 0734 | | | | | | | | | | | | | | 0834 | | | | |
| ➔ Birmingham New St a | 0601 | 0615 | | 0643 | 0646 | | 0711 | 0714 | 0720 | 0740 | 0744 | 0748 | 0751 | 0800 | 0808 | 0814 | 0820 | 0827 | 0839 | 0844 | 0848 | 0851 | 0856 | 0908 | 0914 | 0921 | | |

| | AWC | WM | LN | AWC | XC | AWC | WM | LN | TfW | AWC | WM | LN | AWC | XC | AWC | WM | LN | TfW | AWC | WM | LN | AWC | XC | AWC | WM | LN |
|------------------------------|------|------|------|------|------|------|------|------|------|------|------|------|------|------|------|------|------|------|------|------|------|------|------|------|------|------|
| London Euston d | 0810 | | 0723 | 0816 | | 0840 | | 0756 | | 0910 | | 0823 | 0916 | | 0936 | | 0856 | | 1010 | | 0923 | 1016 | | 1040 | | 0956 |
| ➔ Northampton d | | | 0840 | | | | 0910 | | | | | 0940 | | | | | 1010 | | | | 1040 | | | | | 1110 |
| Long Buckby d | | | 0852 | | | | 0922 | | | | | 0952 | | | | | 1022 | | | | 1052 | | | | | 1122 |
| ➔ Rugby d | | | 0904 | 0915 | | | 0934 | | | | | 1004 | 1015 | | | | 1034 | | | | 1104 | 1115 | | | | 1134 |
| ➔ Coventry d | 0906 | | 0915 | 0927 | 0930 | 0936 | | 0945 | | 1006 | | 1015 | 1027 | 1030 | 1035 | | 1045 | | 1106 | | 1115 | 1127 | 1130 | 1136 | | 1145 |
| Canley d | | | 0918 | | | | 0948 | | | | | 1018 | | | | | 1048 | | | | 1118 | | | | | 1148 |
| Tile Hill d | | | 0922 | | | | 0952 | | | | | 1022 | | | | | 1052 | | | | 1122 | | | | | 1152 |
| Berkswell d | | | 0925 | | | | 0955 | | | | | 1025 | | | | | 1055 | | | | 1125 | | | | | 1155 |
| Hampton-in-Arden d | | | 0930 | | | | 1000 | | | | | 1030 | | | | | 1100 | | | | 1130 | | | | | 1200 |
| ➔ Birmingham International d | 0916 | 0921 | 0934 | 0938 | 0941 | 0946 | 0951 | 1004 | 1008 | 1016 | 1021 | 1034 | 1038 | 1041 | 1044 | 1051 | 1104 | 1108 | 1116 | 1121 | 1134 | 1138 | 1141 | 1147 | 1151 | 1204 |
| Marston Green d | | | 0924 | | | | 0954 | | | | | 1024 | | | | | 1054 | | | | 1124 | | | | | 1154 |
| Lea Hall d | | | 0928 | | | | 0958 | | | | | 1028 | | | | | 1058 | | | | 1128 | | | | | 1158 |
| Stechford d | | | 0931 | | | | 1001 | | | | | 1031 | | | | | 1101 | | | | 1131 | | | | | 1201 |
| Adderley Park d | | | 0935 | | | | | | | | | 1034 | | | | | 1108 | | | | 1134 | | | | | |
| ➔ Birmingham New St a | 0927 | 0939 | 0945 | 0948 | 0951 | 0956 | 1008 | 1014 | 1020 | 1027 | 1039 | 1044 | 1048 | 1051 | 1055 | 1108 | 1114 | 1120 | 1127 | 1139 | 1144 | 1148 | 1151 | 1157 | 1208 | 1214 |

| | TfW | AWC | WM | LN | AWC | XC | AWC | WM | LN | TfW | AWC | WM | LN | AWC | XC | AWC | WM | LN | TfW | AWC | WM | LN | AWC | XC | AWC | WM |
|------------------------------|------|------|------|------|------|------|------|------|------|------|------|------|------|------|------|------|------|------|------|------|------|------|------|------|------|------|
| London Euston d | | 1110 | | 1023 | 1116 | | 1140 | | 1056 | | 1210 | | 1119 | 1216 | | 1240 | | 1156 | | 1310 | | 1223 | 1316 | | 1340 | |
| ➔ Northampton d | | | | 1140 | | | | 1210 | | | | | 1240 | | | | | 1310 | | | | 1340 | | | | 1410 |
| Long Buckby d | | | | 1152 | | | | 1222 | | | | | 1252 | | | | | 1322 | | | | 1352 | | | | 1420 |
| ➔ Rugby d | | | | 1204 | 1215 | | | 1234 | | | | | 1304 | 1315 | | | | 1334 | | | | 1404 | 1415 | | | 1436 |
| ➔ Coventry d | 1206 | | | 1215 | 1227 | 1230 | 1236 | | 1245 | | 1306 | | 1315 | 1327 | 1330 | 1336 | | 1345 | | 1406 | | 1415 | 1427 | 1430 | 1436 | |
| Canley d | | | | 1218 | | | | 1248 | | | | | 1318 | | | | | 1348 | | | | 1418 | | | | 1436 |
| Tile Hill d | | | | 1222 | | | | 1252 | | | | | 1322 | | | | | 1352 | | | | 1422 | | | | 1436 |
| Berkswell d | | | | 1225 | | | | 1255 | | | | | 1325 | | | | | 1355 | | | | 1425 | | | | 1436 |
| Hampton-in-Arden d | | | | 1230 | | | | 1300 | | | | | 1330 | | | | | 1400 | | | | 1430 | | | | 1436 |
| ➔ Birmingham International d | 1208 | 1216 | 1221 | 1234 | 1238 | 1241 | 1246 | 1251 | 1304 | 1308 | 1316 | 1321 | 1334 | 1338 | 1341 | 1346 | 1351 | 1404 | 1408 | 1416 | 1421 | 1434 | 1438 | 1441 | 1447 | 1451 |
| Marston Green d | | | | 1224 | | | | 1254 | | | | | 1324 | | | | | 1354 | | | | 1424 | | | | 1454 |
| Lea Hall d | | | | 1228 | | | | 1258 | | | | | 1328 | | | | | 1358 | | | | 1428 | | | | 1458 |
| Stechford d | | | | 1231 | | | | 1301 | | | | | 1331 | | | | | 1401 | | | | 1431 | | | | 1501 |
| Adderley Park d | | | | 1234 | | | | | | | | | 1334 | | | | | 1404 | | | | 1434 | | | | 1501 |
| ➔ Birmingham New St a | 1220 | 1227 | 1239 | 1245 | 1248 | 1251 | 1256 | 1308 | 1314 | 1320 | 1327 | 1339 | 1344 | 1348 | 1351 | 1356 | 1408 | 1414 | 1420 | 1427 | 1439 | 1444 | 1448 | 1451 | 1457 | 1508 |

| | LN | TfW | AWC | WM | LN | AWC | XC | AWC | WM | LN | TfW | AWC | WM | LN | AWC | XC | AWC | WM | LN | TfW | AWC | WM | LN | AWC | XC | AWC | |
|------------------------------|------|------|------|------|------|------|------|------|------|------|------|------|------|------|------|------|------|------|------|------|------|------|------|------|------|------|------|
| London Euston d | | 1256 | | 1410 | | 1323 | 1416 | | 1440 | | 1356 | | 1510 | | 1423 | 1516 | | 1536 | | 1456 | | 1610 | | 1523 | 1616 | | 1640 |
| ➔ Northampton d | | | | 1410 | | | | | 1510 | | | | | 1540 | | | | 1610 | | | | | | 1640 | | | 1710 |
| Long Buckby d | | | | 1422 | | | | | 1522 | | | | | 1552 | | | | 1622 | | | | | | 1652 | | | 1720 |
| ➔ Rugby d | | | | 1434 | | | 1504 | 1515 | | 1534 | | | | 1604 | 1612 | | | 1634 | | | | | | 1704 | 1715 | | 1739 |
| ➔ Coventry d | 1445 | | | 1506 | | 1515 | 1527 | 1530 | 1536 | | 1545 | | 1606 | | 1615 | 1627 | 1630 | 1636 | | 1645 | | 1706 | | 1715 | 1727 | 1730 | 1739 |
| Canley d | | | | 1448 | | | | | 1548 | | | | | 1618 | | | | 1648 | | | | | | 1718 | | | 1739 |
| Tile Hill d | | | | 1452 | | | | | 1552 | | | | | 1622 | | | | 1652 | | | | | | 1722 | | | 1739 |
| Berkswell d | | | | 1455 | | | | | 1555 | | | | | 1625 | | | | 1655 | | | | | | 1725 | | | 1739 |
| Hampton-in-Arden d | | | | 1500 | | | | | 1600 | | | | | 1630 | | | | 1700 | | | | | | 1730 | | | 1739 |
| ➔ Birmingham International d | 1504 | 1508 | 1516 | 1521 | 1534 | 1538 | 1541 | 1546 | 1551 | 1604 | 1608 | 1616 | 1621 | 1634 | 1638 | 1641 | 1646 | 1651 | 1704 | 1708 | 1716 | 1721 | 1734 | 1738 | 1741 | 1749 | |
| Marston Green d | | | | 1524 | | | | | 1554 | | | | | 1624 | | | | 1654 | | | | | | 1724 | | | |

Valid from 15 December 2025 to 15 May 2026

Mondays to Fridays

| | WM | LN | TfW | AWC | WM | LN | AWC | XC | AWC | WM | LN | TfW | AWC | WM | LN | AWC | XC | AWC | WM | LN | TfW | AWC | WM | LN | AWC | XC |
|----------------------------|------|------|------|------|------|------|------|------|------|------|------|------|------|------|------|------|------|------|------|------|------|------|------|------|------|------|
| London Euston d | | 1556 | | 1710 | | 1626 | 1716 | | 1740 | | 1656 | | 1810 | | 1726 | 1816 | | 1840 | | 1756 | | 1910 | | 1826 | 1916 | |
| Northampton d | | 1710 | | | | 1740 | | | | | 1806 | | | | 1840 | | | | | 1906 | | | | 1940 | | |
| Long Buckby d | | 1722 | | | | 1752 | | | | | 1819 | | | | 1852 | | | | | 1918 | | | | 1952 | | |
| Rugby d | | 1734 | | | | 1804 | 1815 | | | | 1834 | | | | 1904 | 1915 | | | | 1934 | | | | 2004 | 2015 | |
| Coventry d | | 1745 | 1806 | | 1815 | 1827 | 1830 | 1836 | | 1845 | | 1906 | | 1915 | 1927 | 1930 | 1936 | | 1945 | 2006 | | | 2015 | 2027 | 2030 | |
| Canley d | | 1748 | | | | 1818 | | | | 1848 | | | | 1918 | | | | | 1948 | | | | 2018 | | | |
| Tile Hill d | | 1752 | | | | 1822 | | | | 1852 | | | | 1922 | | | | | 1952 | | | | 2022 | | | |
| Berkswell d | | 1755 | | | | 1825 | | | | 1855 | | | | 1925 | | | | | 1955 | | | | 2025 | | | |
| Hampton-in-Arden d | | 1800 | | | | 1830 | | | | 1900 | | | | 1930 | | | | | 2000 | | | | 2030 | | | |
| Birmingham International d | 1751 | 1804 | 1808 | 1816 | 1821 | 1834 | 1838 | 1841 | 1846 | 1851 | 1904 | 1908 | 1916 | 1921 | 1934 | 1938 | 1941 | 1946 | 1951 | 2004 | 2008 | 2016 | 2021 | 2034 | 2038 | 2041 |
| Marston Green d | 1754 | | | | 1824 | | | | | 1854 | | | | 1924 | | | | | 1954 | | | | 2024 | | | |
| Lea Hall d | 1758 | | | | 1828 | | | | | 1858 | | | | 1928 | | | | | 1958 | | | | 2028 | | | |
| Stechford d | 1801 | | | | 1831 | | | | | 1901 | | | | 1931 | | | | | 2001 | | | | 2031 | | | |
| Adderley Park d | | | | | 1834 | | | | | | | | | 1934 | | | | | | | | 2034 | | | | |
| Birmingham New St a | 1808 | 1815 | 1820 | 1827 | 1839 | 1844 | 1848 | 1851 | 1858 | 1907 | 1915 | 1920 | 1927 | 1939 | 1944 | 1948 | 1951 | 2000 | 2007 | 2014 | 2020 | 2027 | 2040 | 2044 | 2048 | 2051 |

| | AWC | WM | LN | TfW | AWC | WM | LN | AWC | XC | AWC | WM | LN | AWC | WM | LN | XC | AWC | WM | LN | TfW | LN | AWC | AWC | AWC | AWC | AWC |
|----------------------------|------|------|------|------|------|------|------|------|------|------|------|------|------|------|------|------|------|------|------|------|------|------|------|------|------|------|
| London Euston d | 1940 | | | 1856 | | 2010 | | 1923 | 2016 | | 2040 | | 1956 | 2106 | | 2023 | | 2129 | | 2056 | | 2150 | 2230 | 2300 | 2300 | 2330 |
| Northampton d | | | | 2010 | | | | 2040 | | | | | 2110 | | | 2134 | | | | 2216 | | 2312 | | | | |
| Long Buckby d | | | | 2022 | | | | 2052 | | | | | 2122 | | | 2145 | | | | 2229 | | 2323 | | | | |
| Rugby d | | | | 2034 | | | | 2104 | 2115 | | | | 2134 | | | 2159 | | 2229 | | 2242 | | 2334 | 2359 | 0033 | 0053 | 0059 |
| Coventry d | 2036 | | | 2045 | | 2106 | | 2115 | 2127 | 2130 | 2136 | | 2145 | 2206 | | 2215 | 2228 | 2240 | | 2254 | | 2345 | 0011 | 0044 | 0104 | 0111 |
| Canley d | | | | 2048 | | | | 2118 | | | | | 2148 | | | 2218 | | | | 2257 | | 2348 | | | | |
| Tile Hill d | | | | 2052 | | | | 2122 | | | | | 2152 | | | 2222 | | | | 2301 | | 2352 | | | | |
| Berkswell d | | | | 2055 | | | | 2125 | | | | | 2155 | | | 2225 | | | | 2304 | | 2355 | | | | |
| Hampton-in-Arden d | | | | 2100 | | | | 2130 | | | | | 2200 | | | 2230 | | | | 2309 | | 2359 | | | | |
| Birmingham International d | 2047 | 2051 | 2104 | 2109 | 2116 | 2121 | 2134 | 2138 | 2141 | 2146 | 2151 | 2204 | 2216 | 2221 | 2234 | 2238 | 2251 | 2258 | 2313 | 2316 | 0004 | 0021 | 0054 | 0114 | 0121 | 0131 |
| Marston Green d | | | | 2054 | | | | 2124 | | | | | 2224 | | | | | | 2301 | | | 0007 | | | | |
| Lea Hall d | | | | 2058 | | | | 2128 | | | | | 2228 | | | | | | 2305 | | | 0011 | | | | |
| Stechford d | | | | 2101 | | | | 2131 | | | | | 2201 | | | | | | 2308 | | | 0014 | | | | |
| Adderley Park d | | | | | | | | 2134 | | | | | 2234 | | | | | | | | | 0017 | | | | |
| Birmingham New St a | 2057 | 2108 | 2114 | 2121 | 2128 | 2139 | 2145 | 2148 | 2151 | 2156 | 2211 | 2216 | 2227 | 2242 | 2244 | 2249 | 2302 | 2315 | 2324 | 2330 | 0023 | 0033 | 0104 | 0124 | 0132 | 0142 |

Notes & Symbols

- PlusBus add-on tickets available
- Connection with West Midlands Metro
- First Class accommodation available

- a Arrival time
- d Departure time
- FO Runs Fridays only
- FX Runs Mondays to Thursdays only

- AWC Service operated by Avanti West Coast
- LN Service operated by London Northwestern Railway
- TfW Service operated by Transport for Wales
- WM Service operated by West Midlands Railway
- XC Service operated by CrossCountry

Passengers will need to hold a valid ticket for travel by these services.
 Tickets shown WMR/LNR services only are not valid.

Valid from 20 December 2025
to 16 May 2026

Saturdays

| | WM | LN | LN | WM | WM | LN | LN | WM | LN | TfW | WM | LN | AWC | XC | WM | LN | TfW | AWC | WM | LN | AWC | XC | AWC | WM | LN | TfW | | |
|------------------------------|------|------|----|----|----|------|------|------|----|------|------|------|------|------|------|------|------|------|------|------|------|------|------|------|------|------|------|------|
| London Euston d | | | | | | | | | | | | | 0616 | | | | 0539 | 0710 | | 0621 | 0716 | | | | | 0738 | | |
| ➔ Northampton d | 0510 | 0514 | | | | 0543 | 0602 | | | 0611 | | | 0642 | | | | 0710 | | | 0740 | | | | | | 0810 | | |
| Long Buckby d | 0522 | 0526 | | | | 0554 | 0613 | | | 0622 | | | 0653 | | | | 0722 | | | 0752 | | | | | | 0822 | | |
| ➔ Rugby d | 0533 | 0542 | | | | 0605 | 0625 | | | 0634 | | | 0704 | 0715 | | | 0734 | | | 0804 | 0815 | | | | | 0834 | | |
| ➔ Coventry d | 0525 | 0543 | | | | 0600 | 0616 | | | 0645 | | | 0715 | 0727 | 0730 | | 0745 | 0806 | | 0815 | 0827 | 0830 | 0836 | | | 0845 | | |
| Canley d | | 0546 | | | | 0603 | 0619 | | | 0648 | | | 0718 | | | | 0748 | | | 0818 | | | | | | 0848 | | |
| Tile Hill d | | 0550 | | | | 0607 | 0623 | | | 0652 | | | 0722 | | | | 0752 | | | 0822 | | | | | | 0852 | | |
| Berkswell d | | 0554 | | | | 0610 | 0627 | | | 0655 | | | 0725 | | | | 0755 | | | 0825 | | | | | | 0855 | | |
| Hampton-in-Arden d | | 0558 | | | | 0615 | 0631 | | | 0700 | | | 0730 | | | | 0800 | | | 0830 | | | | | | 0900 | | |
| ➔ Birmingham International d | 0534 | 0602 | | | | 0616 | 0622 | 0635 | | 0651 | 0704 | 0709 | 0721 | 0734 | 0738 | 0741 | 0751 | 0803 | 0808 | 0816 | 0821 | 0834 | 0838 | 0841 | 0847 | 0851 | 0904 | 0908 |
| Marston Green d | 0538 | | | | | 0619 | 0625 | | | 0654 | | | 0724 | | | | 0754 | 0807 | | 0824 | | | | | | 0854 | | |
| Lea Hall d | 0541 | | | | | 0623 | 0629 | | | 0658 | | | 0728 | | | | 0758 | | | 0828 | | | | | | 0858 | | |
| Stechford d | 0544 | | | | | 0626 | 0632 | | | 0701 | | | 0731 | | | | 0801 | | | 0831 | | | | | | 0901 | | |
| Adderley Park d | 0549 | | | | | 0635 | | | | 0704 | | | 0734 | | | | | | | 0834 | | | | | | | | |
| ➔ Birmingham New St a | 0555 | 0612 | | | | 0632 | 0642 | 0645 | | 0711 | 0714 | 0721 | 0739 | 0745 | 0748 | 0751 | 0808 | 0815 | 0820 | 0827 | 0839 | 0845 | 0848 | 0851 | 0856 | 0908 | 0914 | 0920 |

| | AWC | WM | LN | AWC | XC | AWC | WM | LN | TfW | AWC | WM | LN | AWC | XC | AWC | WM | LN | TfW | AWC | WM | LN | AWC | XC | AWC | WM | LN | | | | | | | |
|------------------------------|------|------|------|------|------|------|------|------|------|------|------|------|------|------|------|------|------|------|------|------|------|------|------|------|------|------|------|------|------|------|------|--|------|
| London Euston d | 0810 | | | 0723 | 0816 | | | 0840 | | 0756 | | | 0910 | | | | 0823 | 0916 | | 0940 | | | | | | 0856 | 1010 | 0923 | 1016 | | 1040 | | 0956 |
| ➔ Northampton d | | | | 0840 | | | | 0910 | | 0910 | | | 0940 | | | | 0940 | | | 1010 | | | | | | | 1040 | | | | | | 1110 |
| Long Buckby d | | | | 0852 | | | | 0922 | | 0922 | | | 0952 | | | | 0952 | | | 1022 | | | | | | | 1052 | | | | | | 1122 |
| ➔ Rugby d | | | | 0904 | 0915 | | | 0934 | | 0934 | | | 1004 | 1015 | | | 1004 | | | 1034 | | | | | | | 1104 | 1115 | | | | | 1134 |
| ➔ Coventry d | 0906 | | | 0915 | 0927 | 0930 | 0936 | | | 0945 | | | 1006 | | | | 1015 | 1027 | 1030 | 1038 | | | | | | 1045 | 1106 | 1115 | 1127 | 1130 | 1136 | | 1145 |
| Canley d | | | | 0918 | | | | 0948 | | 0948 | | | 1018 | | | | 1018 | | | 1048 | | | | | | | 1118 | | | | | | 1148 |
| Tile Hill d | | | | 0922 | | | | 0952 | | 0952 | | | 1022 | | | | 1022 | | | 1052 | | | | | | | 1122 | | | | | | 1152 |
| Berkswell d | | | | 0925 | | | | 0955 | | 0955 | | | 1025 | | | | 1025 | | | 1055 | | | | | | | 1125 | | | | | | 1155 |
| Hampton-in-Arden d | | | | 0930 | | | | 1000 | | 1000 | | | 1030 | | | | 1030 | | | 1100 | | | | | | | 1130 | | | | | | 1200 |
| ➔ Birmingham International d | 0916 | 0921 | 0934 | 0938 | 0941 | 0946 | 0951 | 1004 | 1008 | 1016 | 1021 | 1034 | 1038 | 1041 | 1048 | 1051 | 1104 | 1108 | 1116 | 1121 | 1134 | 1138 | 1141 | 1147 | 1151 | 1204 | | | | | | | |
| Marston Green d | | | | 0924 | | | | 0954 | | 0954 | | | 1024 | | | | 1054 | | | 1124 | | | | | | | 1154 | | | | | | 1204 |
| Lea Hall d | | | | 0928 | | | | 0958 | | 0958 | | | 1028 | | | | 1058 | | | 1128 | | | | | | | 1158 | | | | | | 1201 |
| Stechford d | | | | 0931 | | | | 1001 | | 1001 | | | 1031 | | | | 1101 | | | 1131 | | | | | | | 1201 | | | | | | |
| Adderley Park d | | | | 0934 | | | | 1004 | | 1004 | | | 1034 | | | | 1104 | | | 1134 | | | | | | | 1201 | | | | | | |
| ➔ Birmingham New St a | 0927 | 0939 | 0944 | 0948 | 0951 | 0956 | 1008 | 1014 | 1020 | 1027 | 1039 | 1045 | 1048 | 1051 | 1058 | 1108 | 1114 | 1120 | 1127 | 1139 | 1144 | 1148 | 1151 | 1157 | 1208 | 1214 | | | | | | | |

| | TfW | AWC | WM | LN | AWC | XC | AWC | WM | LN | TfW | AWC | WM | LN | AWC | XC | AWC | WM | LN | TfW | AWC | WM | LN | AWC | XC | AWC | WM | LN | | | | | | |
|------------------------------|------|------|------|------|------|------|------|------|------|------|------|------|------|------|------|------|------|------|------|------|------|------|------|------|------|------|------|------|------|------|------|--|------|
| London Euston d | | 1110 | | 1023 | 1116 | | | 1140 | | 1056 | | | 1210 | | | | 1123 | 1216 | | 1240 | | | | | | 1156 | 1310 | 1223 | 1316 | | 1340 | | |
| ➔ Northampton d | | | | 1140 | | | | 1210 | | 1210 | | | 1240 | | | | 1240 | | | 1310 | | | | | | | 1340 | | | | | | 1410 |
| Long Buckby d | | | | 1152 | | | | 1222 | | 1222 | | | 1252 | | | | 1252 | | | 1322 | | | | | | | 1352 | | | | | | 1422 |
| ➔ Rugby d | | | | 1204 | 1215 | | | 1234 | | 1234 | | | 1304 | 1315 | | | 1304 | | | 1334 | | | | | | | 1404 | 1415 | | | | | 1484 |
| ➔ Coventry d | 1206 | | | 1215 | 1227 | 1230 | 1236 | | | 1245 | | | 1306 | | | | 1315 | 1327 | 1330 | 1336 | | | | | | 1345 | 1406 | 1415 | 1427 | 1430 | 1436 | | 1506 |
| Canley d | | | | 1218 | | | | 1248 | | 1248 | | | 1318 | | | | 1318 | | | 1348 | | | | | | | 1418 | | | | | | 1488 |
| Tile Hill d | | | | 1222 | | | | 1252 | | 1252 | | | 1322 | | | | 1322 | | | 1352 | | | | | | | 1422 | | | | | | 1492 |
| Berkswell d | | | | 1225 | | | | 1255 | | 1255 | | | 1325 | | | | 1325 | | | 1355 | | | | | | | 1425 | | | | | | 1495 |
| Hampton-in-Arden d | | | | 1230 | | | | 1300 | | 1300 | | | 1330 | | | | 1330 | | | 1400 | | | | | | | 1430 | | | | | | 1500 |
| ➔ Birmingham International d | 1208 | 1216 | 1221 | 1234 | 1238 | 1241 | 1246 | 1251 | 1304 | 1308 | 1316 | 1321 | 1334 | 1338 | 1341 | 1346 | 1351 | 1404 | 1408 | 1416 | 1421 | 1434 | 1438 | 1441 | 1447 | 1451 | | | | | | | |
| Marston Green d | | | | 1224 | | | | 1254 | | 1254 | | | 1324 | | | | 1354 | | | 1424 | | | | | | | 1454 | | | | | | 1524 |
| Lea Hall d | | | | 1228 | | | | 1258 | | 1258 | | | 1328 | | | | 1358 | | | 1428 | | | | | | | 1458 | | | | | | 1528 |
| Stechford d | | | | 1231 | | | | 1301 | | 1301 | | | 1331 | | | | 1401 | | | 1431 | | | | | | | 1501 | | | | | | 1571 |
| Adderley Park d | | | | 1234 | | | | 1304 | | 1304 | | | 1334 | | | | 1404 | | | 1434 | | | | | | | 1504 | | | | | | 1574 |
| ➔ Birmingham New St a | 1220 | 1227 | 1239 | 1244 | 1248 | 1251 | 1256 | 1308 | 1314 | 1320 | 1327 | 1339 | 1344 | 1348 | 1351 | 1356 | 1408 | 1414 | 1420 | 1427 | 1439 | 1445 | 1448 | 1451 | 1457 | 1508 | | | | | | | |

| | LN | TfW | AWC | WM | LN | AWC | XC | AWC | WM | LN | TfW | AWC | WM | LN | AWC | XC | AWC | WM | LN | TfW | AWC | WM | LN | AWC | XC | AWC | WM | LN | | | | | |
|-----------------|------|-----|------|------|------|-----|----|------|------|------|------|------|------|------|-----|----|------|------|----|------|-----|----|----|-----|----|------|------|------|------|--|------|--|------|
| London Euston d | | | 1256 | | 1410 | | | 1323 | 1416 | | | 1440 | | | | | 1423 | 1516 | | 1540 | | | | | | 1456 | 1610 | 1523 | 1616 | | 1640 | | |
| ➔ Northampton d | | | 1410 | | | | | 1440 | | 1440 | | | 1510 | | | | 1540 | | | 1610 | | | | | | | 1640 | | | | | | 1710 |
| Long Buckby d | | | 1422 | | | | | 1452 | | 1452 | | | 1522 | | | | 1552 | | | 1622 | | | | | | | 1652 | | | | | | 1722 |
| ➔ Rugby d | | | 1434 | | | | | 1504 | 1515 | | | 1534 | | | | | 1604 | 1615 | | 1634 | | | | | | | 1704 | 1715 | | | | | 1784 |
| ➔ Coventry d | 1445 | | | 1507 | | | | 1515 | 1527 | 1530 | 1536 | | | 1545 | | | 1606 | | | | | | | | | | | | | | | | |

Valid from 20 December 2025 to 16 May 2026

Saturdays

| | WM | LN | TfW | AWC | WM | LN | AWC | XC | AWC | WM | LN | TfW | AWC | WM | LN | AWC | XC | AWC | WM | LN | TfW | AWC | WM | LN | AWC | XC | | | | | | | | | | | | | | | | | | | | | | |
|----------------------------|------|------|------|------|------|------|------|------|------|------|------|------|------|------|------|------|------|------|------|------|------|------|------|------|------|------|------|------|------|------|------|--|--|--|------|------|--|--|------|------|------|------|--|------|------|------|--|--|
| London Euston d | | | | 1556 | | | 1710 | | | 1623 | 1716 | | | 1740 | | | | | | 1656 | | | | | 1810 | | | | 1723 | 1816 | | | | | 1756 | | | | | 1910 | | | | 1823 | 1916 | | | |
| Northampton d | | | | 1710 | | | 1740 | | | 1740 | | | | 1810 | | | | | | 1810 | | | | | | 1840 | | | | 1840 | | | | | | 1910 | | | | | 1940 | | | | | | | |
| Long Buckby d | | | | 1722 | | | 1752 | | | 1822 | | | | 1822 | | | | | | 1822 | | | | | | 1852 | | | | 1852 | | | | | | | | | 1922 | | | | | 1952 | | | | |
| Rugby d | | | | 1734 | | | 1804 | 1815 | | 1834 | | | | 1834 | | | | | | 1834 | | | | | | 1904 | 1915 | | | 1904 | 1915 | | | | | | | | | 1934 | | | | 2004 | 2015 | | | |
| Coventry d | | | | 1745 | 1806 | | 1815 | 1827 | 1830 | 1836 | | | | 1845 | | | | | | 1845 | | | | | | 1906 | 1915 | 1927 | 1930 | 1936 | | | | | | | | | | 1945 | 2006 | | | 2015 | 2027 | 2030 | | |
| Canley d | | | | 1748 | | | 1818 | | | 1848 | | | | 1848 | | | | | | 1848 | | | | | | 1918 | | | | 1918 | | | | | | | | | | 1948 | | | | 2018 | | | | |
| Tile Hill d | | | | 1752 | | | 1822 | | | 1852 | | | | 1852 | | | | | | 1852 | | | | | | 1922 | | | | 1922 | | | | | | | | | | | 1952 | | | | 2022 | | | |
| Berkswell d | | | | 1755 | | | 1825 | | | 1855 | | | | 1855 | | | | | | 1855 | | | | | | 1925 | | | | 1925 | | | | | | | | | | | | 1955 | | | | 2025 | | |
| Hampton-in-Arden d | | | | 1800 | | | 1830 | | | 1900 | | | | 1900 | | | | | | 1900 | | | | | | 1930 | | | | 1930 | | | | | | | | | | | 2000 | | | | 2030 | | | |
| Birmingham International d | 1751 | 1804 | 1808 | 1816 | 1821 | 1834 | 1838 | 1841 | 1847 | 1851 | 1904 | 1908 | 1916 | 1921 | 1934 | 1938 | 1941 | 1946 | 1951 | 2004 | 2009 | 2016 | 2021 | 2034 | 2038 | 2041 | | | | | | | | | | | | | | | | | | | | | | |
| Marston Green d | 1754 | | | 1824 | | | | | | 1854 | | | | 1854 | | | | | | 1854 | | | | | | 1924 | | | | 1924 | | | | | | | | | | | | | | | | | | |
| Lea Hall d | 1758 | | | 1828 | | | | | | 1858 | | | | 1858 | | | | | | 1858 | | | | | | 1928 | | | | 1928 | | | | | | | | | | | | | | | | | | |
| Stechford d | 1801 | | | 1831 | | | | | | 1901 | | | | 1901 | | | | | | 1901 | | | | | | 1931 | | | | 1931 | | | | | | | | | | | | | | | | | | |
| Adderley Park d | | | | 1834 | | | | | | 1901 | | | | 1901 | | | | | | 1901 | | | | | | 1934 | | | | 1934 | | | | | | | | | | | | | | | | | | |
| Birmingham New St a | 1808 | 1814 | 1820 | 1827 | 1839 | 1844 | 1848 | 1851 | 1857 | 1908 | 1914 | 1920 | 1926 | 1940 | 1944 | 1948 | 1951 | 1956 | 2008 | 2014 | 2021 | 2027 | 2040 | 2044 | 2048 | 2051 | | | | | | | | | | | | | | | | | | | | | | |

| | AWC | WM | LN | TfW | WM | LN | XC | LN | AWC | WM | WM | LN | AWC | XC | WM | LN | AWC | LN | AWC | LN | | | | | | | | | |
|----------------------------|------|------|------|------|------|------|------|------|------|------|------|------|------|------|------|------|------|------|------|------|------|--|--|--|------|------|------|------|------|
| London Euston d | 1934 | | | 1856 | | | | | 1920 | | | | 1946 | 2025 | | | | | 2021 | 2104 | | | | | 2039 | 2123 | 2109 | 2142 | 2127 |
| Northampton d | | | | 2010 | | | | | 2040 | | | | 2103 | | | | | | 2140 | | | | | | 2208 | | 2231 | | 2254 |
| Long Buckby d | | | | 2022 | | | | | 2052 | | | | 2114 | | | | | | 2152 | | | | | | 2219 | | 2242 | | 2305 |
| Rugby d | | | | 2034 | | | | | 2104 | 2125 | 2137 | | 2204 | 2215 | | | | | 2204 | 2215 | | | | | 2230 | 2241 | 2253 | 2258 | 2316 |
| Coventry d | 2036 | | | 2045 | | | | | 2115 | 2130 | 2149 | | 2215 | 2227 | 2230 | | | | 2215 | 2227 | 2230 | | | | 2240 | 2252 | 2304 | 2309 | 2327 |
| Canley d | | | | 2048 | | | | | 2118 | | 2138 | | 2218 | | | | | | 2218 | | | | | | 2243 | | | | 2330 |
| Tile Hill d | | | | 2052 | | | | | 2122 | | 2142 | | 2222 | | | | | | 2222 | | | | | | 2247 | | | | 2334 |
| Berkswell d | | | | 2055 | | | | | 2125 | | 2145 | | 2225 | | | | | | 2225 | | | | | | 2251 | | | | 2337 |
| Hampton-in-Arden d | | | | 2100 | | | | | 2130 | | 2150 | | 2230 | | | | | | 2230 | | | | | | 2255 | | | | 2342 |
| Birmingham International d | 2046 | 2051 | 2104 | 2108 | 2121 | 2134 | 2141 | 2154 | 2200 | 2203 | 2221 | 2233 | 2237 | 2240 | 2246 | 2259 | 2303 | 2314 | 2319 | 2345 | | | | | | | | | 2345 |
| Marston Green d | | | | 2054 | | | | | 2124 | | | | 2206 | 2224 | | | | | 2206 | 2224 | | | | | 2249 | | | | 2349 |
| Lea Hall d | | | | 2058 | | | | | 2128 | | | | 2210 | 2228 | | | | | 2210 | 2228 | | | | | 2253 | | | | 2352 |
| Stechford d | | | | 2101 | | | | | 2131 | | | | 2213 | 2231 | | | | | 2213 | 2231 | | | | | 2256 | | | | 2355 |
| Adderley Park d | | | | 2134 | | | | | 2216 | 2234 | | | 2259 | | | | | | 2216 | 2234 | | | | | 2259 | | | | 2359 |
| Birmingham New St a | 2058 | 2108 | 2114 | 2120 | 2139 | 2148 | 2151 | 2202 | 2210 | 2221 | 2241 | 2243 | 2247 | 2250 | 2306 | 2308 | 2315 | 2325 | 2329 | 0003 | | | | | | | | | |

Notes & Symbols

- PlusBus add-on tickets available
- Connection with West Midlands Metro
- First Class accommodation available
- a Arrival time
- d Departure time

- AWC Service operated by Avanti West Coast
- LN Service operated by London Northwestern Railway
- TfW Service operated by Transport for Wales
- WM Service operated by West Midlands Railway
- XC Service operated by CrossCountry

Passengers will need to hold a valid ticket for travel by these services.
 Tickets shown WMR/LNR services only are not valid.

Valid from 14 December 2025 to 10 May 2026

Sundays

| | WM | LN | AWC | LN | TFW | WM | LN | WM | AWC | XC | LN | TFW | WM | LN | WM | AWC | XC | LN | TFW | WM | LN | WM | AWC | XC | LN | TFW |
|------------------------------|------|------|------|------|------|------|------|------|------|------|------|------|------|------|------|------|------|------|------|------|------|------|------|----|----|-----|
| | | | □ | | | | | | □ | □ | | | | | | □ | □ | | | | | | □ | □ | | |
| London Euston d | | | 0748 | 0724 | | | 0751 | | 0850 | | 0825 | | 0853 | | 0952 | | 0925 | | 0956 | | 1049 | | 1024 | | | |
| ➔ Northampton d | | | | 0906 | | | 0927 | 0933 | | | 0959 | | 1028 | 1043 | | | 1100 | | 1129 | 1140 | | 1159 | | | | |
| Long Buckby d | | | | 0917 | | | 0938 | 0945 | | | 1010 | | 1039 | 1054 | | | 1111 | | 1129 | 1140 | | 1159 | | | | |
| ➔ Rugby d | | 0857 | 0923 | 0928 | | | 0951 | 0956 | 1015 | | 1022 | | 1051 | 1105 | 1115 | | 1123 | | 1151 | 1203 | 1215 | | 1222 | | | |
| ➔ Coventry d | 0834 | 0908 | 0934 | 0938 | | | 1006 | 1027 | 1030 | 1033 | | | 1115 | 1127 | 1130 | 1134 | | | 1215 | 1227 | 1230 | | 1233 | | | |
| Canley d | 0837 | 0911 | | 0941 | | | 1009 | | | 1036 | | | 1118 | | | 1137 | | | 1218 | | | | 1236 | | | |
| Tile Hill d | 0841 | 0915 | | 0945 | | | 1013 | | | 1040 | | | 1122 | | | 1141 | | | 1222 | | | | 1240 | | | |
| Berkswell d | 0844 | | | 0949 | | | 1017 | | | 1043 | | | 1126 | | | 1144 | | | 1225 | | | | 1243 | | | |
| Hampton-in-Arden d | 0849 | | | 0953 | | | 1021 | | | 1048 | | | 1130 | | | 1149 | | | 1230 | | | | 1248 | | | |
| ➔ Birmingham International d | 0852 | 0922 | 0945 | 0957 | 1006 | 1021 | 1025 | 1038 | 1041 | 1052 | 1108 | 1121 | 1134 | 1138 | 1141 | 1153 | 1208 | 1221 | 1234 | 1238 | 1241 | 1252 | 1308 | | | |
| Marston Green d | 0856 | 0925 | | 1000 | | 1024 | 1028 | | | 1055 | | 1124 | | | | 1156 | | | 1224 | | | 1255 | | | | |
| Lea Hall d | 0859 | 0928 | | | | 1028 | 1032 | | | | | 1128 | | | | | | | 1228 | | | | | | | |
| Stechford d | 0902 | 0931 | | | | 1031 | 1035 | | | | | 1131 | | | | | | | 1231 | | | | | | | |
| Adderley Park d | 0906 | 0935 | | | | 1034 | 1038 | | | | | 1134 | | | | | | | 1234 | | | | | | | |
| ➔ Birmingham New St a | 0910 | 0939 | 0955 | 1008 | 1017 | 1039 | 1043 | 1048 | 1051 | 1103 | 1120 | 1139 | 1144 | 1148 | 1151 | 1204 | 1220 | 1239 | 1244 | 1248 | 1251 | 1304 | 1320 | | | |

| | LN | AWC | WM | WM | XC | AWC | LN | TFW | AWC | WM | LN | AWC | XC | AWC | LN | TFW | AWC | WM | LN | AWC | XC | AWC | LN | TFW | XC | AWC |
|------------------------------|------|------|------|------|------|------|------|------|------|------|------|------|------|------|------|------|------|------|------|------|------|------|------|------|------|------|
| | | □ | | | □ | □ | | | □ | | | □ | □ | □ | | | □ | | | □ | □ | □ | | | □ | □ |
| London Euston d | 1052 | 1152 | | | | 1239 | 1124 | | 1309 | | 1222 | 1315 | | 1339 | 1256 | | 1409 | | 1322 | 1415 | | 1439 | 1356 | | | 1509 |
| ➔ Northampton d | 1219 | | 1240 | | | 1309 | | | 1340 | | 1409 | | | 1409 | | | 1440 | | 1440 | | | 1509 | | | | |
| Long Buckby d | 1230 | | 1251 | | | 1320 | | | 1352 | | 1420 | | | 1420 | | | 1451 | | 1451 | | | 1520 | | | | |
| ➔ Rugby d | 1242 | 1254 | 1303 | | | 1331 | | | 1404 | 1415 | 1432 | | | 1432 | | | 1503 | 1515 | | | 1532 | | | | | |
| ➔ Coventry d | 1306 | | 1315 | 1330 | 1336 | 1343 | | 1406 | 1415 | 1427 | 1430 | 1436 | 1442 | 1506 | | | 1515 | 1527 | 1530 | 1536 | 1542 | 1600 | 1606 | | | |
| Canley d | | | 1318 | | | 1346 | | | 1418 | | 1445 | | | 1445 | | | 1518 | | | 1518 | | | 1545 | | | |
| Tile Hill d | | | 1322 | | | 1350 | | | 1422 | | 1449 | | | 1449 | | | 1522 | | | 1522 | | | 1549 | | | |
| Berkswell d | | | 1325 | | | 1353 | | | 1425 | | 1453 | | | 1453 | | | 1525 | | | 1525 | | | 1553 | | | |
| Hampton-in-Arden d | | | 1330 | | | 1358 | | | 1430 | | 1457 | | | 1457 | | | 1530 | | | 1530 | | | 1557 | | | |
| ➔ Birmingham International d | 1316 | 1321 | 1334 | 1341 | 1346 | 1402 | 1407 | 1416 | 1421 | 1434 | 1438 | 1441 | 1446 | 1501 | 1506 | 1516 | 1521 | 1534 | 1538 | 1541 | 1547 | 1601 | 1607 | 1610 | 1616 | |
| Marston Green d | | 1324 | | | | 1405 | | | 1424 | | 1505 | | | 1505 | | | 1524 | | | 1524 | | | 1605 | | | |
| Lea Hall d | | 1328 | | | | | | | 1428 | | 1528 | | | 1528 | | | 1528 | | | 1528 | | | | | | |
| Stechford d | | 1331 | | | | | | | 1431 | | 1531 | | | 1531 | | | 1531 | | | 1531 | | | | | | |
| Adderley Park d | | 1334 | | | | | | | 1434 | | 1534 | | | 1534 | | | 1534 | | | 1534 | | | | | | |
| ➔ Birmingham New St a | 1326 | 1339 | 1344 | 1351 | 1356 | 1413 | 1419 | 1427 | 1439 | 1445 | 1448 | 1451 | 1456 | 1513 | 1518 | 1527 | 1539 | 1545 | 1548 | 1551 | 1557 | 1613 | 1619 | 1620 | 1627 | |

| | WM | LN | AWC | XC | AWC | LN | TFW | XC | AWC | WM | LN | AWC | XC | AWC | LN | TFW | AWC | WM | LN | AWC | XC | AWC | LN | XC | TFW | AWC |
|------------------------------|------|------|------|------|------|------|------|------|------|------|------|------|------|------|------|------|------|------|------|------|------|------|------|------|------|------|
| | | | □ | □ | □ | | | □ | □ | | | □ | □ | □ | | | □ | | | □ | □ | □ | | | □ | □ |
| London Euston d | 1422 | 1515 | | | 1539 | 1456 | | 1609 | | 1522 | 1615 | | 1639 | 1556 | | 1709 | | 1622 | 1715 | | 1739 | 1656 | | | 1809 | |
| ➔ Northampton d | 1540 | | | | 1609 | | | 1640 | | 1709 | | | 1709 | | | 1740 | | 1740 | | | 1809 | | | | | |
| Long Buckby d | 1551 | | | | 1620 | | | 1651 | | 1720 | | | 1720 | | | 1751 | | 1751 | | | 1820 | | | | | |
| ➔ Rugby d | 1603 | 1615 | | | 1632 | | | 1703 | 1715 | 1732 | | | 1732 | | | 1803 | 1815 | | | 1832 | | | | | | |
| ➔ Coventry d | 1615 | 1627 | 1630 | 1638 | 1642 | | 1700 | 1706 | 1715 | 1727 | 1730 | 1736 | 1742 | 1806 | | | 1815 | 1827 | 1830 | 1836 | 1842 | 1858 | | 1906 | | |
| Canley d | 1618 | | | | 1645 | | | 1718 | | 1745 | | | 1745 | | | 1818 | | | 1818 | | | 1845 | | | | |
| Tile Hill d | 1622 | | | | 1649 | | | 1722 | | 1749 | | | 1749 | | | 1822 | | | 1822 | | | 1849 | | | | |
| Berkswell d | 1625 | | | | 1653 | | | 1725 | | 1753 | | | 1753 | | | 1825 | | | 1825 | | | 1853 | | | | |
| Hampton-in-Arden d | 1630 | | | | 1657 | | | 1730 | | 1757 | | | 1757 | | | 1830 | | | 1830 | | | 1857 | | | | |
| ➔ Birmingham International d | 1621 | 1634 | 1638 | 1641 | 1650 | 1701 | 1706 | 1710 | 1716 | 1721 | 1734 | 1738 | 1741 | 1746 | 1801 | 1806 | 1816 | 1821 | 1834 | 1838 | 1841 | 1847 | 1901 | 1908 | 1911 | 1915 |
| Marston Green d | 1624 | | | | 1705 | | | 1724 | | 1805 | | | 1805 | | | 1824 | | | 1824 | | | 1905 | | | | |
| Lea Hall d | 1628 | | | | | | | 1728 | | 1828 | | | 1828 | | | 1828 | | | 1828 | | | | | | | |
| Stechford d | 1631 | | | | | | | 1731 | | 1831 | | | 1831 | | | 1831 | | | 1831 | | | | | | | |
| Adderley Park d | 1634 | | | | | | | 1734 | | 1834 | | | 1834 | | | 1834 | | | 1834 | | | | | | | |
| ➔ Birmingham New St a | 1639 | 1645 | 1648 | 1651 | 1703 | 1713 | 1718 | 1720 | 1727 | 1739 | 1744 | 1748 | 1751 | 1756 | 1813 | 1818 | 1827 | 1840 | 1845 | 1848 | 1851 | 1857 | 1914 | 1918 | 1922 | 1927 |

Notes & Symbols

- ➔ PlusBus add-on tickets available
- ➔ Connection with West Midlands Metro
- First Class accommodation available
- a Arrival time
- d Departure time

AWC Service operated by Avanti West Coast
 LN Service operated by London Northwestern Railway
 TFW Service operated by Transport for Wales
 WM Service operated by West Midlands Railway
 XC Service operated by CrossCountry

Passengers will need to hold a valid ticket for travel by these services.
 Tickets shown WMR/LNR services only are not valid.

Valid from 14 December 2025
to 10 May 2026

Sundays

| | WM | LN | AWC | XC | AWC | LN | TfW | AWC | WM | LN | AWC | XC | AWC | LN | TfW | AWC | WM | LN | AWC | XC | LN | AWC | TfW | LN | AWC | XC |
|------------------------------|------|------|------|------|------|------|------|------|------|------|------|------|------|------|------|------|------|------|------|------|------|------|------|------|------|------|
| London Euston d | | 1722 | 1815 | | 1839 | 1756 | | 1909 | | 1822 | 1915 | | 1939 | 1856 | | 2009 | | 1922 | 2015 | | 1956 | 2036 | | 2020 | 2056 | |
| ➔ Northampton d | | 1840 | ↓ | | 1909 | | | 1940 | ↓ | | 2009 | | | 2009 | | 2040 | ↓ | | 2059 | ↓ | | 2131 | | | | |
| Long Buckby d | | 1851 | ↓ | | 1920 | | | 1951 | ↓ | | 2020 | | | 2020 | | 2051 | ↓ | | 2110 | ↓ | | 2142 | | | | |
| ➔ Rugby d | | 1903 | 1915 | | 1932 | | | 2003 | 2015 | | 2032 | | | 2032 | | 2103 | 2115 | | 2121 | 2138 | | 2153 | | | | |
| ➔ Coventry d | | 1915 | 1927 | 1930 | 1936 | 1942 | | 2006 | | 2015 | 2027 | 2030 | 2039 | 2043 | | 2106 | | 2114 | 2127 | 2130 | 2135 | 2149 | | 2205 | 2216 | 2223 |
| Canley d | | 1918 | | | 1945 | | | 2018 | | 2046 | | | | 2046 | | 2117 | | 2138 | | 2208 | | | | | | |
| Tile Hill d | | 1922 | | | 1949 | | | 2022 | | 2050 | | | | 2050 | | 2121 | | 2142 | | 2212 | | | | | | |
| Berkswell d | | 1925 | | | 1953 | | | 2025 | | 2053 | | | | 2053 | | 2124 | | 2145 | | 2215 | | | | | | |
| Hampton-in-Arden d | | 1930 | | | 1957 | | | 2030 | | 2058 | | | | 2058 | | 2129 | | 2150 | | 2220 | | | | | | |
| ➔ Birmingham International d | 1921 | 1934 | 1938 | 1941 | 1946 | 2001 | 2010 | 2016 | 2021 | 2034 | 2038 | 2041 | 2049 | 2101 | 2108 | 2116 | 2121 | 2133 | 2138 | 2141 | 2153 | 2159 | 2211 | 2223 | 2228 | 2233 |
| Marston Green d | 1924 | | | | 2005 | | | 2024 | | 2105 | | | | 2105 | | 2124 | | 2157 | | 2227 | | | | | | |
| Lea Hall d | 1928 | | | | | | | 2028 | | 2128 | | | | 2128 | | 2131 | | | | | | | | | | |
| Stechford d | 1931 | | | | | | | 2031 | | 2134 | | | | 2134 | | 2134 | | | | | | | | | | |
| Adderley Park d | 1934 | | | | | | | 2034 | | 2134 | | | | 2134 | | 2134 | | | | | | | | | | |
| ➔ Birmingham New St a | 1939 | 1945 | 1948 | 1951 | 1956 | 2013 | 2022 | 2027 | 2039 | 2044 | 2048 | 2051 | 2102 | 2113 | 2119 | 2127 | 2139 | 2142 | 2147 | 2151 | 2205 | 2209 | 2222 | 2234 | 2239 | 2243 |

| | TfW | LN | TfW | LN | AWC | LN | AWC | LN | AWC |
|------------------------------|------|------|------|------|------|------|-------|-------|------|
| London Euston d | | | | 2107 | 2153 | | 2225 | 2203 | 2324 |
| ➔ Northampton d | | 2159 | | 2239 | ↓ | 2312 | ↓ | 2335 | ↓ |
| Long Buckby d | | 2210 | | 2250 | ↓ | 2323 | ↓ | 2346 | ↓ |
| ➔ Rugby d | | 2221 | 2301 | 2324 | 2334 | 2352 | 2357 | 0050s | |
| ➔ Coventry d | | 2235 | 2312 | 2335 | 2345 | 0003 | 0007a | 0101s | |
| Canley d | | 2238 | | 2348 | | | | | |
| Tile Hill d | | 2242 | | 2352 | | | | | |
| Berkswell d | | 2245 | | 2355 | | | | | |
| Hampton-in-Arden d | | 2250 | | 2359 | | | | | |
| ➔ Birmingham International d | 2241 | 2253 | 2307 | 2321 | 2345 | 0003 | 0013 | 0111s | |
| Marston Green d | | 2257 | | 2325 | | 0007 | | | |
| Lea Hall d | | | | 2328 | | | | | |
| Stechford d | | | | 2331 | | | | | |
| Adderley Park d | | | | 2335 | | | | | |
| ➔ Birmingham New St a | 2253 | 2305 | 2320 | 2340 | 2355 | 0015 | 0023 | 0123 | |

Notes & Symbols

- ➔ PlusBus add-on tickets available
- ➔ Connection with West Midlands Metro
- ☐ First Class accommodation available

- a Arrival time
- d Departure time
- s Stops to set down only

- AWC Service operated by Avanti West Coast
- LN Service operated by London Northwestern Railway
- TfW Service operated by Transport for Wales
- WM Service operated by West Midlands Railway
- XC Service operated by CrossCountry

Passengers will need to hold a valid ticket for travel by these services.
Tickets shown WMR/LNR services only are not valid.